

STUDENT FINANCE 2025/26

cyllid myfyrwyr cymru
student finance wales



Ariennir gan
Lywodraeth Cymru
Funded by
Welsh Government

SESSION CONTENTS

- The student finance package
- Additional support
- NHS funding
- Student loan repayment
- Application information
- Managing your money

HOW MUCH DO YOU KNOW?

cyllid myfyrwyr cymru
student finance wales



Ariennir gan
Lywodraeth Cymru
Funded by
Welsh Government

HOW MUCH DO YOU KNOW?

Q

What is the current maximum tuition fee universities or colleges can charge new students in 2025/26?

A

£9,535

Q

How much of this is paid upfront before you go to uni or college?

A

£0

THE STUDENT FINANCE PACKAGE 2025/2026

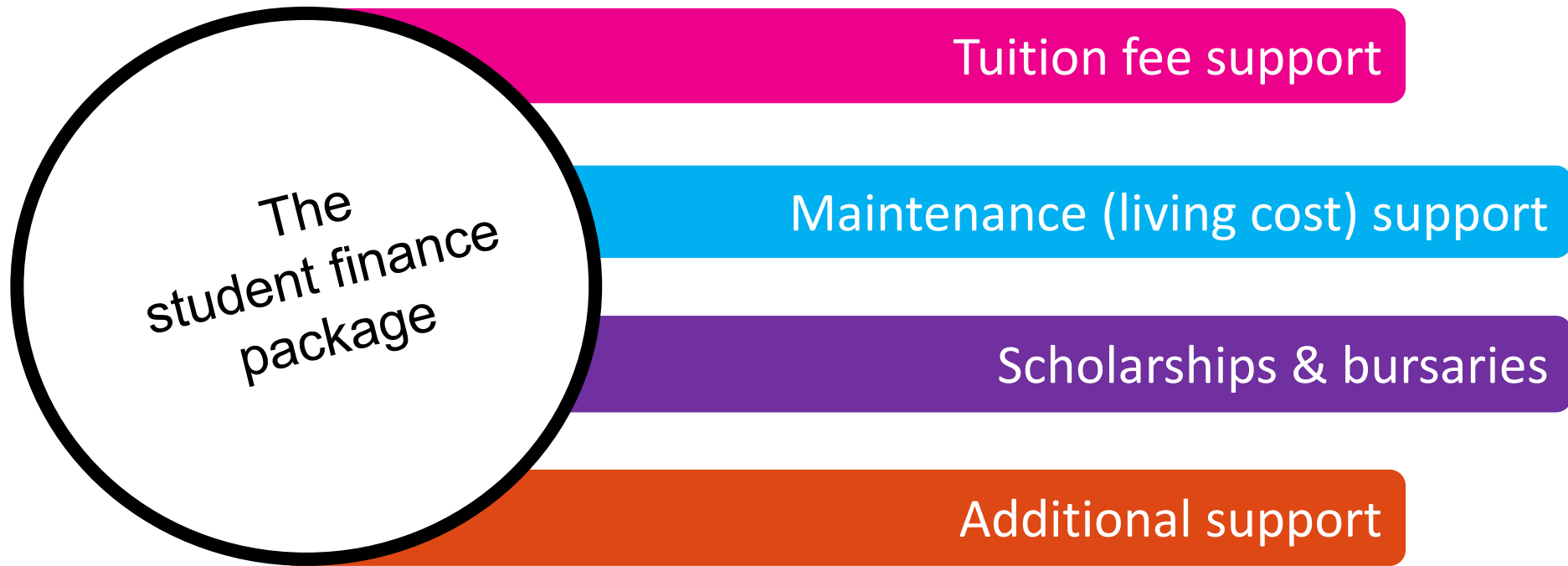
cyllid myfyrwyr cymru
student finance wales



Ariennir gan
Lywodraeth Cymru
Funded by
Welsh Government

THE STUDENT FINANCE PACKAGE

SUPPORT AVAILABLE TO STUDENTS INCLUDES:



cyllid myfyrwyr cymru
student finance wales



Ariennir gan
Lywodraeth Cymru
Funded by
Welsh Government

THE STUDENT FINANCE PACKAGE 2025/26

TUITION FEES

cyllid myfyrwyr cymru
student finance wales



Ariennir gan
Lywodraeth Cymru
Funded by
Welsh Government

TUITION FEES

OVERVIEW

- The maximum tuition fee you can be charged in AY 2025/26 will be £9,535 in Wales and in England.
- The tuition fee will be decided by the university or college. They could charge different amounts for different courses.



TUITION FEES

TUITION FEE SUPPORT

- A Tuition Fee Loan will be available to cover the full cost of your tuition fees.
- **How much Tuition Fee Loan you can get doesn't depend on your household income.**
- We pay it directly to your university or college once you've registered – so you don't need to worry about it.
- Tuition Fee Loans must be paid back, but only when you've left university or college, and your income is over £28,470 a year.
- For the 2025/26 academic year, students at private universities or colleges can borrow up to £6,355 towards* tuition costs, but only if the course has been approved for funding by the Welsh Government.

*Students will have to self-fund any additional fee charged at a private university or college.

THE STUDENT FINANCE PACKAGE 2025/2026 MAINTENANCE SUPPORT

cyllid myfyrwyr cymru
student finance wales



Ariennir gan
Lywodraeth Cymru
Funded by
Welsh Government

SUPPORT FOR LIVING COSTS

- Support is available to help towards living costs you'll have while at university or college and all eligible students will receive the same amount of money to live off while studying.
- This will be the equivalent to the National Living Wage.
- Two types of support are available – **Maintenance Loan** and **Welsh Government Learning Grant**.
- The amount of loan available to you depends on where you live (e.g. with parents, in London etc) and study.
- Support for living costs are paid directly to your bank account each term.

ELIGIBILITY: INDEPENDENT STUDENT STATUS

cyllid myfyrwyr cymru
student finance wales



Ariennir gan
Lywodraeth Cymru
Funded by
Welsh Government

ELIGIBILITY

INDEPENDENT STUDENT STATUS

A student is considered independent if:

- They're 25 or over on the first day of the academic year for which they are applying for support;
- Single Parent
- They have no living parents, or they are irreconcilably estranged from their parents.
- They've supported themselves for at least three years before the start of their course (doesn't have to be three consecutive years);
- Care Leavers

ELIGIBILITY

INDEPENDENT STUDENT STATUS

What does being an independent student mean?

- Student Finance Wales will not take any parental income into account when assessing student entitlement for support
- If married or in a civil partnership, SFW will take into account the income of the student's spouse or civil partner

THE FIGURES

cyllid myfyrwyr cymru
student finance wales



Ariennir gan
Lywodraeth Cymru
Funded by
Welsh Government

MAINTENANCE SUPPORT

WELSH GOVERNMENT LEARNING GRANT

WELSH GOVERNMENT LEARNING GRANT

- A minimum grant of £1,000 for all eligible students.
- Any additional grant will be based on the student's household income.
- Students from households with an income of up to £18,370 will be entitled to the maximum grant available.
- Students from households with an income of up to £59,200 will be entitled to a partial grant.

MAINTENANCE SUPPORT

Income	Living with parents			Living away from home, outside of London			Living away from home, studying in London		
	Grant	Loan	Total	Grant	Loan	Total	Grant	Loan	Total
£18,370 or less	6,885	3,595	£10,480	8,100	4,245	£12,345	10,124	5,291	£15,415
£20,000	6,651	3,829		7,817	4,528		9,760	5,655	
£25,000	5,930	4,550		6,947	5,398		8,643	6,772	
£30,000	5,209	5,271		6,078	6,267		7,526	7,889	
£35,000	4,488	5,992		5,208	7,137		6,408	9,007	
£40,000	3,767	6,713		4,339	8,006		5,291	10,124	
£45,000	3,047	7,433		3,469	8,876		4,174	11,241	
£50,000	2,326	8,154		2,600	9,745		3,056	12,359	
£55,000	1,605	8,875		1,730	10,615		1,939	13,476	
£59,200 or more	1,000	9,480		1,000	11,345		1,000	14,415	

SCHOLARSHIPS AND BURSARIES

Most universities offer additional support to students which could be worth thousands of pounds, so it's important to research what's available and when to apply.

Scholarships:

- can be linked to academic results or an outstanding ability in sport, music etc...
- can be subject specific and are limited in numbers

Bursaries:

- usually depend on personal circumstances and, often, your household income
- vary by university or college



You should check university websites and ask at open days and UCAS conventions for information on scholarships and bursaries: what is available and how/when to apply.

ADDITIONAL SUPPORT

cyllid myfyrwyr cymru
student finance wales



Ariennir gan
Lywodraeth Cymru
Funded by
Welsh Government

ADDITIONAL SUPPORT

OVERVIEW

Extra money or support may be available if you:

- have a disability, including a long-term health condition, mental-health condition or specific learning difficulty, or
- have children or adults who depend on you.

ADDITIONAL SUPPORT

DISABLED STUDENTS' ALLOWANCES (DSAs)

- Help towards the additional costs that you may face as a result of your disability, including a long-term health condition, mental-health condition or specific learning difficulty.

DSAs support:

- is available in addition to the standard student finance package,
- doesn't have to be repaid,
- is not affected by household income, and
- looks at the specific needs of the individual in relation to their disability and how it affects their studies.

ADDITIONAL SUPPORT

You can get help with the costs of:

- specialist equipment, for example a laptop if you need one because of your disability
- non-medical helpers, for example a person such as a British Sign Language (BSL) interpreter or specialist note-taker
- extra travel costs, to attend your course or placement because of your disability
- other disability-related costs of studying, for example having to print additional copies of documents for proof-reading.

Evidence:

We will ask for proof of your condition or disability to help us process your application for DSA.

If you have a specific learning difficulty, you will need to send us a diagnostic report from a suitably qualified Psychologist or Specialist Teacher.

THE STUDENT FINANCE PACKAGE

STUDENTS WITH DEPENDANTS

Childcare Grant

Based on 85% of actual registered/approved childcare costs up to a maximum of:

£192 per week for one child

£329 per week for two or more children

Parents' Learning Allowance

Help with course-related costs for students with dependent children.

You can get up to **£1,945**

Adult Dependants' Grant

For students with a partner or another adult who is financially dependent on them (but not an adult child). You can get up to **£3,407**



Dependants' Grants depend on your household income. Universities may offer additional support to students with childcare/caring responsibilities.

cyllid myfyrwyr cymru
student finance wales



Ariennir gan
Lywodraeth Cymru
Funded by
Welsh Government

NHS FUNDING

cyllid myfyrwyr cymru
student finance wales



Ariennir gan
Lywodraeth Cymru
Funded by
Welsh Government

NHS COURSES

NHS FUNDING

Eligible courses

Students must be accepted for an NHS-funded place on a full or part-time course [in Wales](#) which leads to professional registration as a:

- doctor or dentist (they will be eligible for an NHS bursary after the fourth year of their course)
- chiropodist (including podiatrist), dietitian, occupational therapist, physiotherapist, radiographer, healthcare scientist, paramedic, speech and language therapist
- dental hygienist or dental therapist
- nurse or midwife

OTHER COURSES

NHS COURSES

NHS support

- Students studying on eligible courses [who agree to work in Wales for two years after they graduate](#) may be able to get a bursary from the NHS. A bursary is a yearly payment to help with living costs and tuition fees. It's paid each month and doesn't have to be paid back.
- More detailed information is available at [Student Awards Services - NHS Wales Shared Services Partnership](#)
- Full-time students on NHS degrees can also apply for a fixed grant of £1,000 per year.

SFW support

- Full-time NHS students can also apply to Student Finance Wales for a Maintenance Loan which does not depend on income.

NHS COURSES IN WALES

NHS

Non Means Tested NHS Bursary	Means Tested NHS Bursary	Maintenance Loan (SFW)
£1,000	Up to £2,643 (23/24 figure)	Up to £11,345*

SFW

Tuition Fee Loan	Welsh Government Learning Grant / Maintenance Loan
Up to £9,535	Up to £15,415**

*Based on them living away from home outside of London

**Based on them living away from home in London

NHS COURSES WEBSITE



**GIG CYMRU
NHS WALES**

Partneriaeth
Cydwasaethau
Shared Services
Partnership

[Skip Navigation](#) [Accessibility](#) [Feedback](#) [Staff Intranet](#) [Cymraeg](#)

[Home](#) [Covid-19 Information](#) [About Us](#) [Our Services](#) [All Wales Programmes](#) [Contact Us](#) [Working for us](#) [More](#)[Home](#) > [Our Services](#) > [Student Awards Services](#)

Student Awards Services

- [Decide on your university and healthcare degree](#)
- [How do I apply for a bursary?](#)
- [Applying for a job?](#)
- [Frequently Asked Questions](#)
- [Forms](#)
- [Additional Allowances](#)
- [Help](#)

Student Awards Services - NHS Wales Shared Services Partnership

cyllid myfyrwyr cymru
student finance wales



Ariennir gan
Lywodraeth Cymru
Funded by
Welsh Government

NHS COURSES

FUNDING

The following process is in place for Welsh students taking healthcare courses in Wales who choose **not** to take up bursary funding and instead apply for the standard package of support from Student Finance Wales

(i.e. those students who don't wish to commit in advance to take up the opportunity to work in Wales post qualification for a period of two years).

- NHS Wales will provide a **reference number** that should be used when applying, to confirm to Student Finance Wales that the student is not bursary funded.

NHS COURSES

CROSS-BORDER FUNDING: NEW STUDENTS

Student Domicile	Study Location				
	England	Wales		NI	Scotland
	Is a Healthcare Bursary Available?				
	No	With 2yr	Without 2yr	No	No
Wales (SFW)	Full SFW Support + Additional NHS Support	Full Rate SFW ML + NHS Bursary	Full SFW Support No additional NHS support	N/A Courses not designated for non-NI students	Full SFW Support No additional NHS support

STUDENT LOAN REPAYMENT

cyllid myfyrwyr cymru
student finance wales



Ariennir gan
Lywodraeth Cymru
Funded by
Welsh Government

STUDENT LOAN REPAYMENT

OVERVIEW

- You won't make repayments until your income is over **£28,470 a year**, before tax.
- Full-time students will be due to start repaying in the April after graduating/leaving your course.
- You'll repay 9% of their income over £28,470 and if you're employed, their employer will make deductions from their pay through the HMRC tax system.
- You may get a partial cancellation of your Maintenance Loan of up to **£1,500** when you start repaying.
- If your income falls to £28,470 or below your repayments will stop.

STUDENT LOAN REPAYMENT

THE FIGURES

Income each year before tax	Monthly salary	Approximate monthly repayment
£28,470	£2,372	£0
£30,000	£2,500	£11
£35,000	£2,916	£48
£40,000	£3,333	£86
£50,000	£4,166	£161
£60,000	£5,000	£236



Any outstanding loan balance will be cancelled 30 years after entering repayment.

STUDENT LOAN REPAYMENTS

Interest on your loan will depend on your income and circumstances



During study until
entering repayment



Income:
Under £28,470



Income:
£28,470 to £51,245



Income:
Over £51,245



Interest rate:
Retail Price Index plus 3%



Interest rate:
RPI Only



Interest rate:
RPI plus **up to** 3%



Interest rate:
RPI plus 3%

RPI is a measure of inflation. It measures changes to the cost of living in the UK.

cyllid myfyrwyr cymru
student finance wales



Ariennir gan
Lywodraeth Cymru
Funded by
Welsh Government

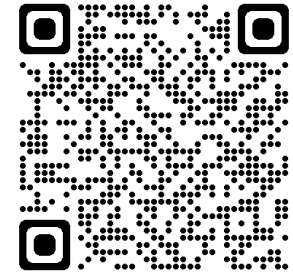
APPLICATION INFORMATION

cyllid myfyrwyr cymru
student finance wales



Ariennir gan
Lywodraeth Cymru
Funded by
Welsh Government

HOW DO I APPLY?



- When the time comes, apply online at www.studentfinancewales.co.uk
- Applications will be out early 2026 – date to be confirmed.
- You don't need a confirmed place at university or college to apply.
- You can change your details online before starting your course.
- If you share information from your application, this helps with scholarships and bursaries.

APPLICATION INFORMATION

COMPLETING AN APPLICATION

Before starting an application, you should have the following to hand:

- Identity: Passport – so SFW can check your identity using valid UK passport details or Original Birth Certificate.
- university and course details (or current preferred choice)
- bank account details and National Insurance number
- your parents' or partner's email address

Once you've submitted your online application:

- send any evidence you've been asked for (this can be uploaded digitally)

SUPPORTING AN APPLICATION

HOUSEHOLD INCOME

If you'll be supporting a student's application for means-tested student finance SFW will need to see details of your household (taxable earned and unearned) income and National Insurance number.

Earned income includes:

- wages, salaries, tips, and other taxable employee pay
- long-term disability benefits received prior to minimum retirement age
- net earnings from self-employment

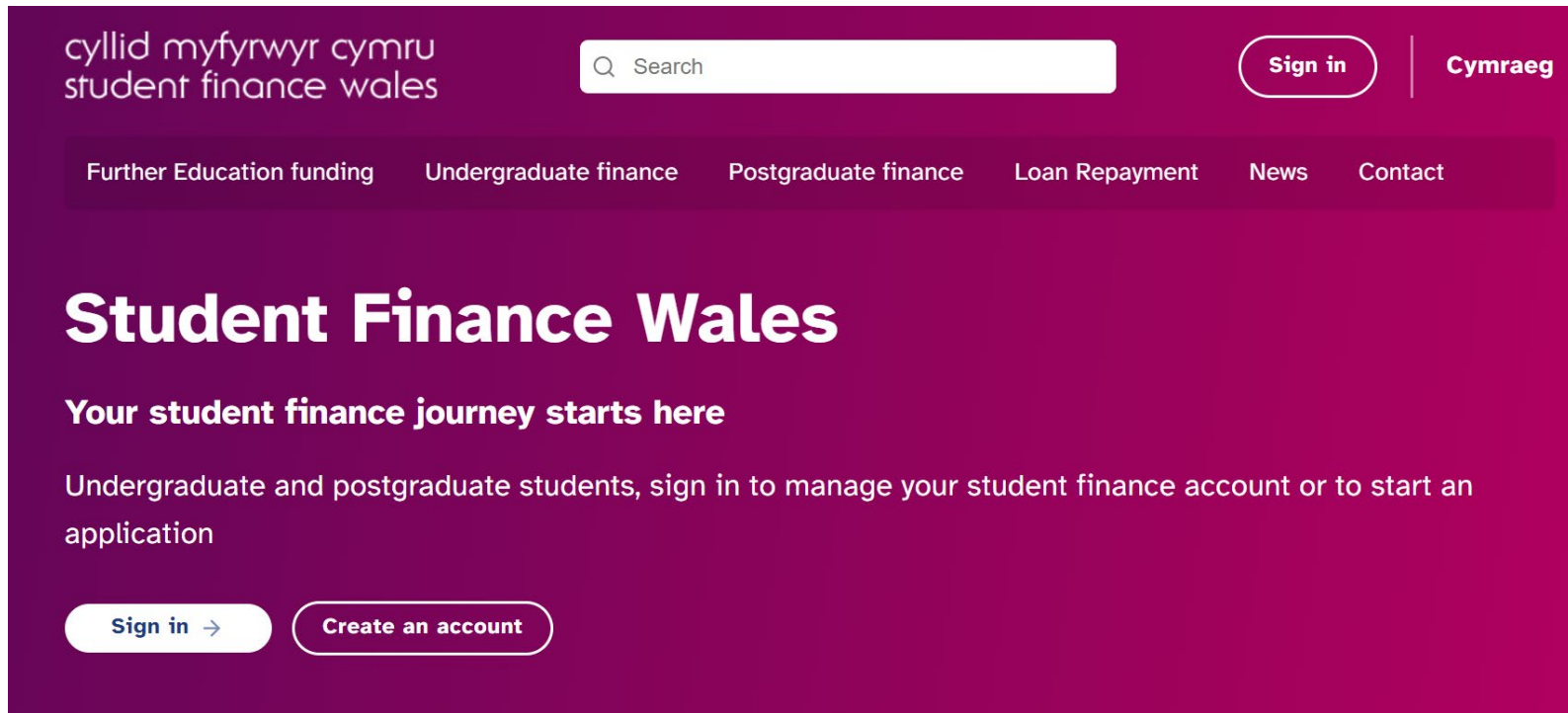
Unearned income includes:

- interest from savings (only the annual summary is required)
- benefits and pensions
- rent from property or a room

For most applications, SLC verify income from your National Insurance number with no need to send any documents, unless we ask for them.

WEBSITE

WWW.STUDENTFINANCEWALES.CO.UK



WWW.STUDENTFINANCEWALES.CO.UK

cyllid myfyrwyr
student finance

cymru
wales

Expecting your first student finance payment? Make sure you've registered on your course, we can't pay you until you do![Show more](#)

Login

Email address or Customer Reference Number (CRN)

[Forgotten your email address or CRN?](#)

Password

☐ Show password

[Forgotten your password?](#)

Continue

Create an account

If you're not already registered , you can create a new account. You'll need an account if:

- you're a **student**, and you want to apply for student finance
- you're a **parent or partner of a student** and need to provide information to support their application.

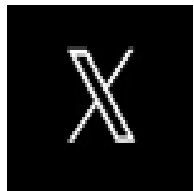
Create an account

SOCIAL MEDIA

FOR THE LATEST SFW NEWS



/SFWales



/SF_Wales



/SFWFILM



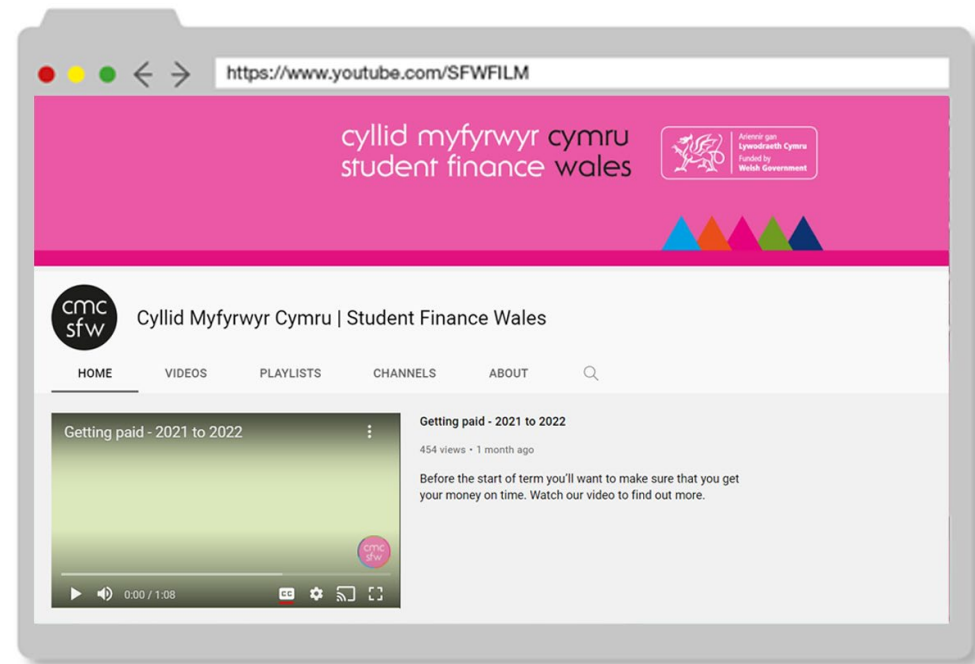
cyllid myfyrwyr cymru
student finance wales



Ariennir gan
Lywodraeth Cymru
Funded by
Welsh Government

A PARENT'S GUIDE TO STUDENT FINANCE

Encourage your parents to watch our film series, which tells them everything they need to know about supporting your application.



www.studentfinancewales.co.uk

They can watch it at www.studentfinancewales.co.uk

cyllid myfyrwyr cymru
student finance wales



MANAGING YOUR MONEY / NEXT STEPS

cyllid myfyrwyr cymru
student finance wales



Ariennir gan
Lywodraeth Cymru
Funded by
Welsh Government

HOW MUCH? – ACCOMMODATION

Q

What's the average monthly cost of student accommodation?

A

£563 per month

?

Lowest

£466 pm

?

Highest

£812 pm

Figures from [National Student Accommodation Survey 2025 – Results - Save the Student](#)
Accommodation Survey



cyllid myfyrwyr cymru
student finance wales



Ariennir gan
Lywodraeth Cymru
Funded by
Welsh Government



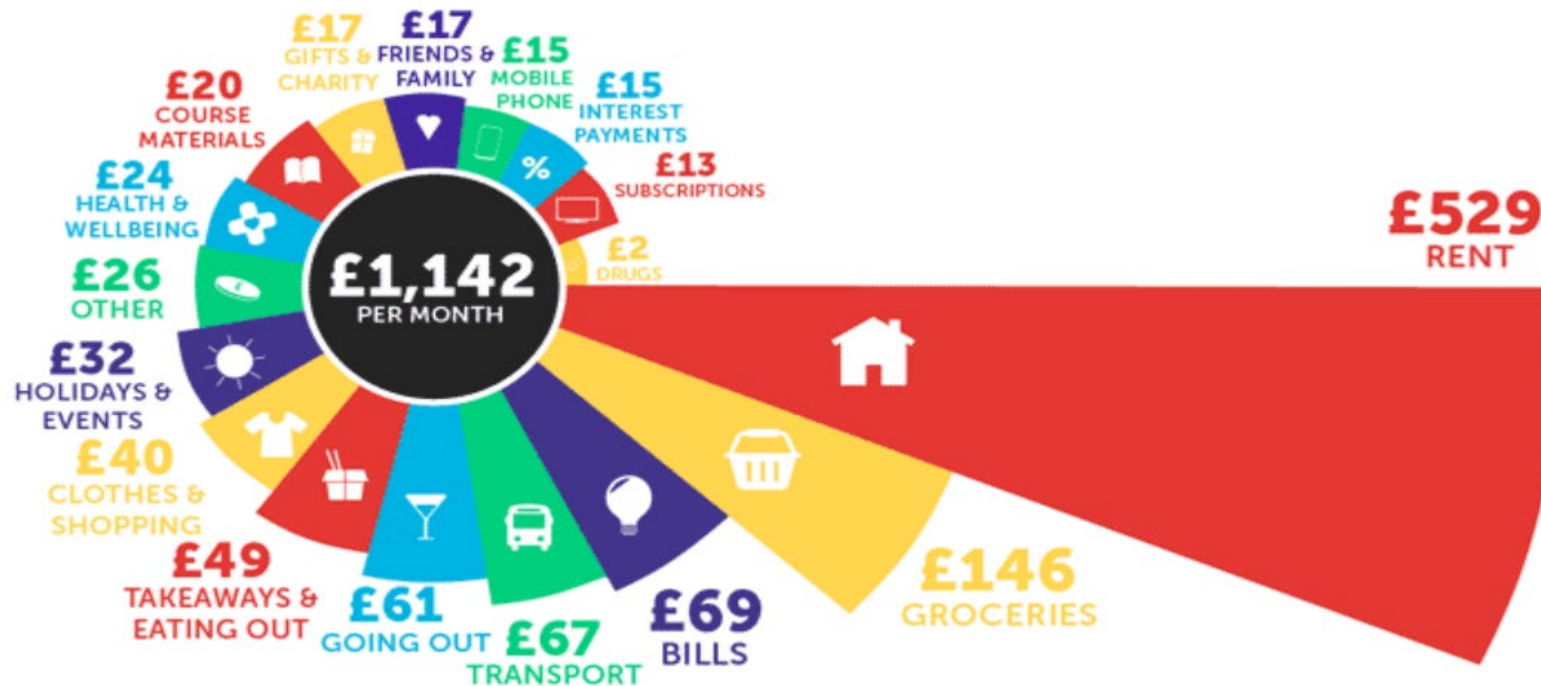
cyllid myfyrwyr cymru
student finance wales



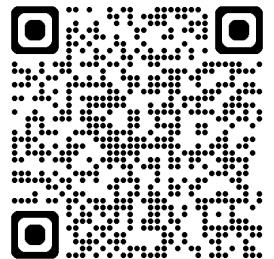
Ariennir gan
Lywodraeth Cymru
Funded by
Welsh Government

CONSIDER THE COSTS

Students across the UK spend an average of **£1,142 each month**, but on what?



Figures from [Student Money Survey 2025 – Results - Save the Student](#)



MONEY MANAGEMENT

HINTS AND TIPS FOR STUDENTS

Before starting in higher education, students should think about the costs they are likely to face and how to manage their money, tips include:

- Take Notification / Approval Letter to university to scan barcode to get your money.
- Plan a budget – and (try to) stick to it! [Student Space](#) covers budgeting, sources of additional support and links to useful resources.
- Check out student bank accounts and discounts from TOTUM, Student Beans and Uni Days .
- Try to avoid taking credit cards, store cards or pay day loans!!
- If you need financial support and advice once you are at university or college, staff there will be able to help.

WHAT NEXT?

- **Research**
 - www.studentfinancewales.co.uk
 - guides and quick guides
- **Apply**
 - online
 - on time
- **Payment**
 - Take Notification Letter to university to receive your money
- **Changes to application**
 - Inform us of any changes asap.

CONTACT STUDENT FINANCE WALES

For further Information on student finance and applications
call us on:

Customer helpline: 0300 200 4050

Rhian_Jones@slc.co.uk

07796 440153

Elen_Jones@slc.co.uk

07815 602492

SFITW@slc.co.uk

There are no silly questions when it comes
to student finance, so if you're unsure, ask!

cyllid myfyrwyr cymru
student finance wales



Ariennir gan
Lywodraeth Cymru
Funded by
Welsh Government

QUESTIONS?

cyllid myfyrwyr cymru
student finance wales



Ariennir gan
Lywodraeth Cymru
Funded by
Welsh Government