



Ysgol Friars

Option Choices 2025-26





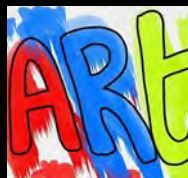
At Ysgol Friars we are proud of our broad, balanced and relevant curriculum. We want the best for our pupils, which is why we have invested heavily in developing and establishing an innovative and engaging curriculum that meets their needs and aspirations.

In line with Welsh Government's Curriculum for Wales, we have implemented exciting developments and new courses. In Years 10 and 11, all pupils will have the opportunity to study English Language and English Literature; Welsh; Mathematics: Numeracy and Mathematics; Science; Religion, Values and Ethics; Welsh Baccalaureate and three optional courses. We offer a large range of academic and vocational courses to suit every pupils' needs and aspirations.

The attached letter provides an outline of the key stages and expectations to ensure that all pupils and families feel informed and supported during the options process.

This booklet includes information on all courses including the courses offered by our successful partnership with Coleg Menai Llandrillo. We encourage you to attend the Year 9 parent's evening on **Tuesday 24th February, 2026** to discuss your child's progress and Year 10 options with your child's subject teachers.

Course Code: 60182519



Art, Craft & Design GCSE

What will I learn?

Art, Craft & Design will inevitably enhance your creativity. It will teach you to take ownership of your own work and improve your thinking skills. You will develop your ideas through investigations and other sources, demonstrating analytical and cultural understanding. Refine your ideas through exploring and selecting appropriate resources, media, materials, techniques and processes. Record your ideas, observations and insights relevant to your intentions, in visual and/or other forms. You will present a personal, informed and meaningful response demonstrating analytical and critical understanding.

What will I need?

You will need to be enthusiastic and be willing to improve your drawing ability. You must understand how to use line, tone and texture in your work. You will learn to use a variety of materials and techniques in your work and understand the process of creating a final piece.

If you want to know about the course. Come see me!



How will I be assessed?

The course is split into two parts:

Unit 1 - 60% marks awarded for the Coursework (120marks)

Unit 2 - 40% marks awarded for the Practical Test (80marks)

What happens after this course?

On completion of the GCSE we offer an AS/A level course in Fine art, this is a very successful course that can lead onto exciting opportunities for further education in the arts or adds value and a breadth of study to those who are following a different route.

Job Ideas

Careers available to those who study Art are wide and varied. Graphic designers, animation, ceramic artists, illustrator, fashion designer, Make-up artist, interior designer, work in the media, web designer and photographer to name but a few.



Miss C Larmour
2nd in Expressive Arts Faculty

Course Code: C0011555



Business Studies GCSE



What will I learn?

On this course candidates will be given the opportunity to study the following units:

- Unit 1: Introduction to the Business World – fundamentals of business, business activity, nature of business enterprises, understanding the different types of business ownership and aims, markets, business sectors, consumers.
- Unit 2: Key Business Considerations – research a chosen business in your locality
- Unit 3: Business Strategies for Success – key business functions of finance, marketing, human resources, production, strategies for business growth.
- Unit 4: Business Creation – develop enterprise skills by carrying out primary and secondary market research for a business proposal.

How will I learn?

Group work
Independent research for the non-examined assessment
Teacher input
Class discussions
Homework tasks
Past paper style questions
Use of ICT

Ms Alaw Huws
Head of Business Studies



If you
want to know more ask
me about the course

What will I need?

• Knowledge of current affairs • Ability to analyse and evaluate data • Able to use ICT to a good standard • Able to analyse data and calculate percentages • An interest in how Businesses work • Good research skills • Presentation skills. There is a strong emphasis on numeracy and literacy and so you will need to be confident in these areas

How will I be assessed?

Units 1 and 3 are assessed by written examinations. 1 in year 10 and the other in Year 11. Units 2 and 4 are non-examined assessments where you will be given an assignment brief to complete. You will undertake research, analyse the data and provide judgements.

What happens after this course?

Business Studies is taught at A Level in Year 12. It is a two year course and is closely linked to the GCSE qualification.

Job Ideas

• Marketing, •Advertising and Public Relations, •Market Research, •Brand and Product Management, •Accountancy and Finance, •Commercial banking and Investment banking, •Retail and retail management, •Human Resource Management
• Operations management

Course Code: C00/1166/7



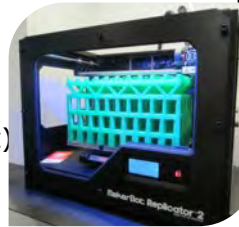
Design & Technology GCSE

What will I learn?

Product Design allows you to work creatively when designing and making and apply technical and practical expertise.

You will learn about:

- The importance of creativity and innovation to good design practice
- How to use various machine and power tools
- How to work with various resistant materials (wood, metal and plastic)
- How to use CNCs such as a 3D printer, laser cutter and a sticker CAM
- Understand the key principles of designing and making
- Use their knowledge, skills and understanding to make design decisions in order to make a quality prototype
- Analyse existing products and produce practical solutions to meet needs, wants and opportunities, recognising their impact on quality of life
- Critically analyse links between the principles of good design, existing solutions and technological knowledge
- You'll study the work of two famous Product Designers and the role Airbus plays in the Engineering industry



How will I learn?

You will develop your skills in designing and making by completing various exciting designing and making projects. Each project will provide you with a different skill set and improve your understanding of how everyday products are manufactured.

You will also study the work of various successful Product Designers such as James Dyson and Bethan Gray.



If you want to know more ask me about the course

Mr S Holdsworth
Head of D&T

What will I need?

You need to be enthusiastic, creative, a good communicator and have the ability to problem solve in order to design and manufacture products that solve a user's need. You must be able to sketch and draw, then bring your idea to life through modelling and then actually make it.

How will I be assessed?

There are two units that will be formally assessed. You achieve your GCSE grade by completing the following:

- 1) Exam - Design and Technology in the 21st Century (50%)
- 2) Coursework – Your own design and make task (50%)

What happens after this course?

Once completing the GCSE Product Design (D&T) course, we offer an exciting AS/A level course in Product Design (D&T). This is a successful and exciting course that opens up avenues into the world of Engineering and Design. This can then lead onto further opportunities in University or industry.

Job Ideas

Engineer, Architect, Product Designer, Animator, Computer aided design specialist, Graphic designer, Tool maker, Aviation Design/Engineering, Marine Engineering/Design, Production designer, theatre/television/film and many more.



Course Code: C00/4040/5



Digital Technology (GCSE)

For learners who wish to begin their journey towards a career that utilises digital technologies or to progress onto advanced level programmes of learning involving digital technologies.

What will I learn?

This WJEC GCSE specification in Digital Technology will enable learners to:

- become independent, confident and knowledgeable users of existing, new and emerging digital technologies
- develop knowledge of different digital technology systems used across a range of occupational sectors
- understand the impact digital technologies can have on individuals and wider society and the ways in which they can bring about change
- develop skills in organising and analysing data to identify trends and audiences
- become creators of digital products, in a variety of formats and for a variety of purposes, that meet specified, authentic needs
- develop transferable skills in using a range of hardware and software
- develop their understanding of the systems development life cycle and of how ideas can become products.

Mr M Ridgway
Head of ICT



If you
want to know more ask
me about the course

How will I be assessed?

Unit 1: The Digital World

On-screen examination: 1hr 30 mins (40%)

Unit 2: The Digital Practices

Non-exam assessment (NEA) 45 hours (40%)

Unit 3: Communicating in the Digital World

On-screen examination: 15 hours (20%)

What happens after this course?

This specification provides a suitable foundation for the study of Digital Technology at either AS or A level.

This specification provides a coherent, satisfying and worthwhile course of study for learners who do not progress to further study in this subject. In addition, this specification will help learners make informed decisions about a wide range of career pathways.

Job Ideas

ICT is integral to almost all administrative jobs, and knowledge of ICT is vital to allow employees to function in the vast majority of job environments.



Mr. T Parry

Course Code: C0007915



Drama GCSE



Overview: GCSE Drama is an exciting, inspiring and practical course that promotes involvement in and enjoyment of drama, as performers and designers. Additionally it provides opportunities to attend live theatre performances and to develop skills as informed and thoughtful audience members. The course is delivered by Mrs R . Rogers Walker who is a Drama Specialist.

Component 1: Devising Theatre (*Internally Assessed - 40% of the Qualification*)

Learners will be assessed on **either** acting **or** design. Learners participate in the creation, development and performance of a piece of devised theatre using **either** the techniques of an influential theatre practitioner **or** a genre, in response to a stimulus set by the board.

Component 2: Performing from a Text (*Externally Assessed - 20% of Qualification*)

Learners will study two extracts from the same play and will participate in a performance using sections from both extracts. Learners will be assessed on acting **or** design.

Mrs R Rogers Walker
Head of Drama



If you
want to know more ask
me about the course

Component 3: Interpreting Theatre (*Written Examination, 90 Minutes, 40% of Qualification*)

Section A: Learners will answer a series of questions on their set text 'Two Faces' by Manon Steffan Ros. In preparation learners are encouraged to study their chosen text practically as a performer, designer and director.

Section B: Learners will answer one question, from a choice of two, requiring analysis and evaluation of a given aspect of a live theatre production seen during the course.

Course Skills: As well as acting and design skills, learners must demonstrate that they can research, work well in a group, manage their time effectively, reflect upon and evaluate their own work (and that of others) and analyse live productions.

6th Form: We offer AS/A Level Drama and Theatre using the WJEC specification.

Careers, Further and Higher Education: Universities and employers look favourably upon students who can demonstrate a wide range of skills, and Drama can contribute much towards creating a 'well-rounded individual' for those who are prepared to work hard at it.

Course Code: 600/8645/2



Engineering L1/2 Vocational



What will I learn?

WJEC Level 1/2 Vocational Award in Engineering offers a learning experience that focuses learning for 14-16 year olds through applied learning, i.e. acquiring and applying knowledge, skills and understanding through purposeful tasks set in sector or subject contexts that have many of the characteristics of real work. The qualification is built from discrete units, but allows for both synoptic learning and assessment. Each unit has an applied purpose which acts as a focus for the learning in the unit. The applied purpose is the vehicle through which the learning contained in the unit is made relevant and purposeful. It is also the means by which learners are enthused, engaged and motivated to study engineering. The applied purpose provides the opportunity for authentic work related learning, but more than this, it will require learners to consider how the use and application of their learning impacts on individuals, employers, society and the environment.

How will I learn?

Via specifically designed modules that provide opportunities for all learners to develop their knowledge and understanding of materials, processing methods and techniques. There are opportunities to develop and improve the use of your use of ICT and computer aided design. Not forgetting about the use of computer numerically controlled machines and traditional engineering machinery. There will be plenty of time spent in the workshops designing and manufacturing products using an array of different materials.

What will I need?

- An interest in Engineering
- An interest in Product Design and Technology
- Have the ability to be innovative
- The ability to problem solve
- The ability design, redevelop and model ideas
- The ability to read and interpret technical working drawings

Mr S Smith



If you
want to know more
ask me
about the course

How will I be assessed?

3 units of work:

- A) Unit 1 provides learners with the opportunity to interpret different types of engineering information in order to plan how to manufacture engineering products (40%)
- B) Unit 2 allows learners to explore how an engineered product is adapted and improved over time, and it offers learners the opportunity to apply their knowledge and understanding to adapt an existing component, element or part of the engineering outcome that they manufactured for Unit (20%)
- C) Unit 3 introduces learners to a range of considerations that impact on engineering design and how modern engineering has had an impact on modern day life at home, work and in society in general (40%)

What happens after this course?

The successful completion of this qualification could provide the learner with opportunities to access a range of Level 3 qualifications including GCE, apprenticeships and vocationally related qualifications.

Such as:

- GCE in Design & Technology here at Ysgol Friars

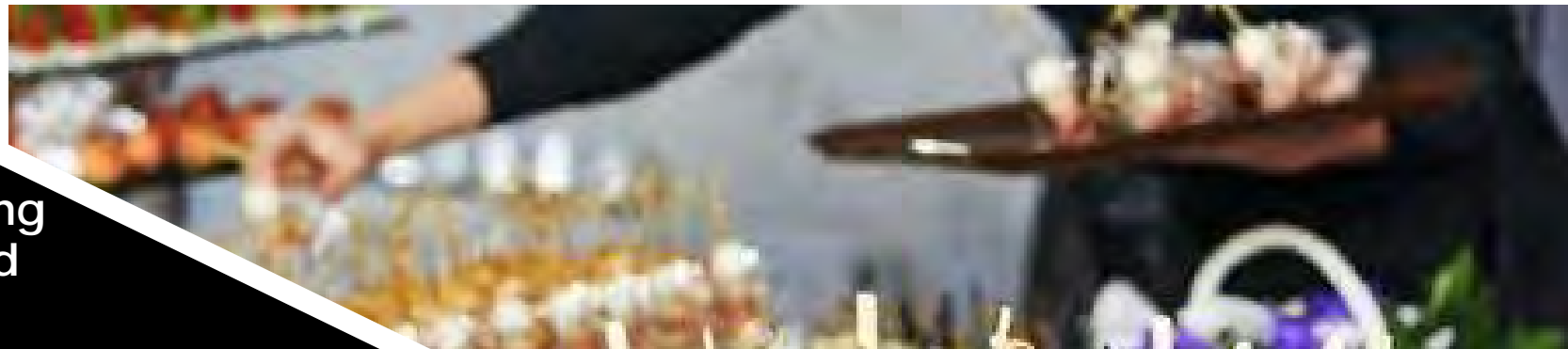


Mr M Thomas

Course Code: C00/4457/4



Hospitality and Catering L1/2 Vocational Award



Ever wondered what it takes to work in a top hotel or restaurant? Does food and discovering new flavours in the kitchen inspire you? Maybe you're interested in developing the skills you need to work front of house? If so, it's time to – find out more about this exciting qualification today!

Unit 1: The Hospitality and Catering industry (40%)

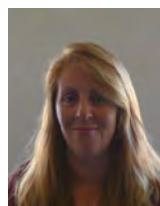
- Learn about the hospitality and catering industry, the types of hospitality and catering providers and about working in the industry.
- Learn about health and safety, and food safety in hospitality and catering, as well as food related causes of ill health.

Unit 2: Hospitality and Catering in action (60%)

- Learn about the importance of nutrition and how cooking methods can impact on nutritional value.
- Learn how to plan nutritious menus as well as factors which affect menu planning. You will learn the skills and techniques needed to prepare, cook and present dishes as well as learning how to review your work effectively.

Hands-On Learning Experience: The WJEC Hospitality and Catering course emphasises practical, hands-on experience in cooking, food preparation, and kitchen management, giving you the skills to excel in real-life culinary environments.

Mrs T Williams
Food and Nutrition Teacher



Industry-Relevant Skills: This course focuses on essential skills demanded by the hospitality industry, such as menu planning, food safety, customer service, and kitchen operations, making you job-ready upon completion.

Pathway to Exciting Careers: Studying Hospitality and Catering opens doors to dynamic career options, from chef and event manager to hotel administrator, providing a solid foundation for roles across the hospitality sector.

Development offside culinary skills, this course builds essential life skills, including teamwork, communication, problem-solving, and time management, which are valuable in any career.

• **Preparation for Further Education:** Completing the WJEC Level 1/2 course can pave the way for further studies, such as Level 3 qualifications in hospitality or catering, apprenticeships, or specialized culinary schools.

• **Focus on Health and Safety Knowledge:** The course emphasises the importance of health, hygiene, and safety in catering, ensuring that you are well-prepared to work in professional settings with high industry standards.

• **Creative and Rewarding Subject:** Hospitality and catering blend creativity with practical skills, making it a rewarding choice for those passionate about food, cooking, and creating memorable dining experiences.



Ms C Holmes

Course Code: [C0007925](#)



French GCSE



What will I learn?

This course will help you to:

- develop understanding of the language in a variety of contexts
- develop knowledge of the language and language learning skills
- develop the ability to communicate effectively in the language
- develop awareness and understanding of countries and communities where the language is spoken

How will I learn?

Students will consolidate and extend their knowledge and use of the language by developing the four skills of listening, speaking, reading and writing within the following three broad themes:

language for leisure and wellbeing
language for travel
language for study and work

Mrs S Ellis-Williams Head of International Languages (IL)



If you
want to know more ask
me about the course

How will I be assessed?

The new GCSE offers a combination of assessments. There are two Non-Examination Assessments (NEA) conducted in during a specific NEA window set by WJEC during the second year of the course (45%) as well as two exams (55%) at the end of Year 11.

Speaking: NEA - 30%

Reading and Writing: NEA - 15%

Listening exam: - 20%

Reading and Writing exam: 35%

What happens after this course?

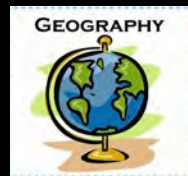
Students with at least a B grade at GCSE have the chance of continuing their study of French at AS and A Level at Ysgol Friars.

Job Ideas

Remember: 75% of the world population do not speak English and 60% of British businesses trade with non-English speaking countries.

Air cabin crew, Banker, Bilingual Secretary, Customs and Excise Officer, Diplomatic Service Careers, Engineer, Holiday Rep, Tour Guide, Hotel Manager, Immigration Officer, Importer/Exporter, Industrial Buyer, Interpreter, Overseas Student Recruitment Officer, Sales and Marketing, Social Worker, Teacher, Teaching English as a Foreign language (TEFL), Tourist Information Officer, Translator, Work in Airports and Ferry Ports.

Course Code: [60176635](#)



Geography GCSE

Geography is the study of places and the relationships between people and their environments. Geographers explore the physical properties of the earth's surface and the human societies spread across it. What can be more important for our future?

WHAT WILL I STUDY?

TITLE/UNIT 1 - Our Physical and Human World. **(Year 10)**

Here you will study:

- Drainage basin and rivers.
- Changing coastlines
- Migration
- Settlement Change

TITLE/UNIT 3 - Our Dynamic and Diverse World. **(Year 11)**

- The geography of inequality
- The highs and lows of our weather
- Wild weather
- Continual climate change.
- Managing global challenges.

HOW WILL I BE ASSESSED?

EXAM 1 - Unit 1 Our Physical and Human World. **(Year 10)**

This is worth 30% of the qualification and is a written exam 1 hour 30 mins.

EXAM 2 - Unit 3 Our dynamic and Diverse World. **(Year 11)**

This is worth 30% of the qualification and is a written exam 1 hour 30 mins.

Non-Examination Assessments (NEA) - There are 2 NEA tasks:

Unit 2 Developing Fieldwork Skills 25% of the qualification. **(Year 10)**

You will carry out a field work visit based on a topic such as, change over time or environment, and investigate this in a chosen location, writing a fieldwork enquiry that will be submitted to WJEC.

Unit 4 Sustainable Solutions, 15% of the qualification **(Year 11)**

You will receive a resource booklet on a geographical issue and will also carry out background reading on the issue. You will then write a report based on a real-world issue in a decision- making task, reporting how sustainable the various options are likely to be.

Geography

Unit 4 Sustainable Solutions, 15% of the qualification

You will receive a resource booklet on a geographical issue and will also carry out background reading on the issue. You will then write a report based on a real-world issue in a decision- making task, reporting how sustainable the various options are likely to be.

WHAT SKILLS WILL I DEVELOP?

- Geography is always in the news. You will develop skills to **interpret, analyse** and **evaluate** information to **make decisions** about issues and problems that affect people and the environment.
- An ability to **collect, process, analyse** and understand qualitative and quantitative data and communicate it to a variety of audiences.
- Develop a reasoned argument and communicate it to a variety of audiences.
- **Teamwork** and **leadership** skills.
- Studying geography allows you to develop a range of personal skills for life, including **time management**, dealing with uncertainty, **flexibility, creativity, problem solving** and **self-confidence**.

CAREERS IN GEOGRAPHY

The transferable skills developed by studying geography are actively sought by employers. There is a wealth of jobs that geographers can do spanning almost every sector! Most jobs have an element of geography in them, whether a doctor investigating the spread of disease or an engineer designing products to cope with less demand for plastic.

Geography is the future!

After the course: C grade or above - Opportunity to study Geography A Level

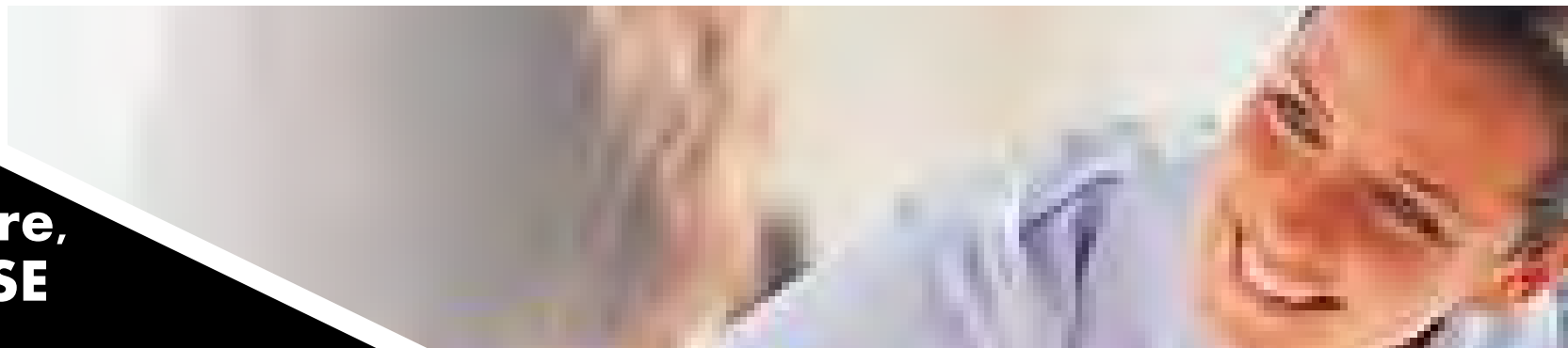
Ms Laura Roberts
Head of Geography



Course Code: [C00/3685/2](#)



Health & Social Care, and Childcare GCSE



What will I learn?

- Learners have the opportunity to develop their understanding of influences on human growth, development, behaviour and well-being.
- Gain an understanding of the social, physical, emotional, and cultural needs of people who use care and support services, and recognise that each individual has a unique blend of abilities and needs.
- Gain an understanding of how service provision in Wales supports the development and well-being of individuals, to be able to make informed decisions now and in later life.
 - actively engage in the study of health and social care, and childcare to develop as effective and independent learners, and as critical and reflective thinkers with enquiring minds.
 - develop an awareness of career pathways available within the health and social care, and

How will I learn?

Use of vocational links, plan and carry out a variety of investigations, evaluate evidence. This qualification provides an opportunity for candidates to pursue a course of study and develop their knowledge and understanding of health and social care in a vocational context:

- Problem Solving
- Decision Making
- Using a range of resources
- Cultural Understanding
- Health & Safety Awareness

Mrs Kelly Hardy
Teacher of Health & Social Care



If you
want to know more ask
me about the course

What will I need?

Basic proficiency in literacy, numeracy, ICT and motivation to work independently.

How will I be assessed?

Unit 1 - Human Growth, development and well-being.

1 written exam paper. 1 ½ hrs externally set and marked. Weighting 40% of overall mark.

Unit 2 - Promoting and maintaining health and well-being. Completion of 2 controlled portfolio tasks set by WJEC, internally assessed. Weighting 60% of overall mark.

What happens after this course?

This course will offer a variety of opportunities for progression into Advanced level GCE; training e.g. Modern Apprenticeships or NVQs; or directly into employment

Job Ideas

Nursing Health Care assistant , Nursery nurse , Physiotherapy , Occupational Therapy, Medicine , Deaf Interpreter , Education Psychologist , Health Promotion Officer , Life Coach , Primary School Teacher , Residential Care Assistant , Social Worker , Speech Therapist , Support Worker , Youth Worker

Course Code: C00/4967/9



History GCSE

What will I learn?

You will study a variety of key issues from Welsh, British, and World History, and evaluate evidence from a wide range of historical periods.

The topics covered are:

In Year 10 -

Unit 1: Medieval – Owain Glyndŵr c.1354–1416 (30%)

Learn about Wales’s most famous rebel leader, Owain Glyndŵr, and how he united much of the country against English rule. Explore the causes, events, and legacy of his uprising, and how it shaped Welsh identity for centuries to come.

Unit 4: A Changing Society – Non-examination assessment (20%)

Investigate how society and culture have changed over time through your own chosen topic. You will plan and complete a historical enquiry using evidence and analysis to reach conclusions.

In Year 11 -

Unit 2: Early Modern – The Spanish Conquest of the Aztecs c.1492–c.1525 (20%)

Study how the Spanish conquistadors overthrew the Aztec Empire. Examine exploration, religion, power, and early colonialism, and consider how this encounter changed both Europe and the Americas.

Unit 3: Modern – Russia and the Soviet Union c.1861–c.1953 (30%)

Explore how Russia changed from a Tsarist empire to a communist superpower. Learn about revolution, dictatorship, and how leaders such as Lenin and Stalin transformed society and the modern world.

How will I learn?

You will learn through a range of activities, including group and paired work, independent research, interactive lessons, and timed assessments.

Peer and self-assessment will help you develop analytical and reflective skills.

- Learn how to investigate and evaluate historical issues, developments, and sources.
- Develop a critical and analytical approach to key historical events and historical evidence.
- Understand how and why people have interpreted the past differently.

What will I need?

An enthusiastic approach to studying History, curiosity about the past, and basic literacy skills.

How will I be assessed?

Unit	Topic	Assessment Type	Weighting
Unit 1	Owain Glyndŵr c.1354–1416	Written Exam	30%
Unit 2	The Spanish Conquest of the Aztecs c.1492–c.1525	Online Assessment	20%
Unit 3	Russia and the Soviet Union c.1861–c.1953	Written Exam	30%
Unit 4	A Changing Society	Non-exam assessment (coursework)	20%

What happens after this course?

After achieving at least a Grade C (or equivalent) in GCSE History, you can progress to AS or A Level History.

The study of History develops skills in research, analysis, communication, and evaluation – highly valued by employers and universities.

Job Ideas

Journalist; Archaeologist; Museum curator; TV researcher; Lawyer; Teacher, Politician, or anything really. Taking History doesn’t constrain you to a specific job.

Mr Rhodri Hughes
Head of Humanities Faculty



If you want to know more about the course, just ask!



Computer Science GCSE

What will I study?

This specification promotes the integrated study of computer science. It will enable learners to develop a broad range of skills in the areas of programming, system development, computer architecture, data, communication and applications. The subject content for GCSE Computer Science will be assessed across three units. Whilst there is a degree of overlap between the content in Unit 1 and Unit 2, the context in which this content is assessed differs. In Unit 1, content is assessed in a theoretical way, whereas in Unit 2 it is assessed through its use within programs and algorithms. The non-exam assessment (NEA) is designed to assess a candidate's ability to apply the knowledge and understanding gained from Units 1 and 2. Candidates will be presented with a given scenario describing the requirements for a computer based solution. All work carried out for Unit 3 will be under teacher supervision, with no access to the Internet or email.

Why choose WJEC GCSE Computer Science?

Computers are widely used in all aspects of business, industry, government, education, leisure and the home. In this technological age, a study of computer science, and particularly how computers are used in the solution of a variety of problems, is essential to learners. Computer science integrates well with subjects across the curriculum. It demands both logical discipline and imaginative creativity in the selection and design of algorithms and the writing, testing and debugging of programs; it relies on an understanding of the rules of language at a fundamental level; it encourages an awareness of the management and organisation of computer systems; it extends learners' horizons beyond the school or college environment in the appreciation of the effects of computer science on society and individuals. This course in Computer Science has been designed to give an understanding of the fundamental concepts of computer science and a broad scope of study opportunities. This specification has been designed to free centres to concentrate on innovative delivery of the course by having a streamlined, uncomplicated, futureproof structure, with realistic technological requirements.

Careers with Computer Science

Computers are widely used in all aspects of business, industry, government, education, leisure and the home. In this increasingly technological age, a study of computer science, and particularly how computers are used in the solution of a variety of problems, is not only valuable to the learners themselves but also essential to the future well-being of the country.

Applications developer
Cyber security analyst
Forensic computer analyst
Games designer or developer
IT consultant
Network engineer
Programmer
Software engineer
Software product manager
Web designer or developer
Other potential opportunities include:
Business analyst
Lecturer
IT trainer
Telecommunication researcher

Mr M Ridgway
Head of ICT



Mr T Parry
Teacher of ICT



How will I be assessed?

Unit 1: Understanding Computer Science	Written examination: 1 hour 45 minutes	50% of the qualification 100 marks
Unit 2: Computational Thinking and Programming	On-screen examination: 2 hours	30% of the qualification 60 marks
Unit 3: Software Development	Non-exam assessment: 20 hours	20% of qualification 80 marks

Course Code: [60182908](#)



Music GCSE

WHAT WILL I STUDY?

The GCSE Music qualification is based on the study and application of the elements of music:

- dynamics
- form and structure
- harmony
- melody and pitch
- performance techniques/articulation
- sonority / timbre • tempo, rhythm and metre
- texture • tonality.

HOW WILL I BE ASSESSED?

Unit 1 – Performing Non-exam assessment 32.5% of qualification: 78 marks. You have to perform on a chosen instrument(s) for a minimum 2 pieces, 4-6 minutes Solo and/or ensemble. You will select pieces that you wish to perform work on them throughout the course and record your final performances to send for examination.

Unit 2 – Composing Assessment Type: Non-exam assessment 32.5% of qualification: 78 marks. You will write 2 compositions, 3-6 minutes total. You will compose your own music in a style you choose, one to a set brief and one to your own brief. You will also submit an assessed reflective log.

Unit 3 – Appraising Assessment Type: Digital exam (1h 30m) 35% of qualification: 84 marks. The exam questions will be based on extracts of music you will be able to listen to, and you will be expected to know and understand the elements of music and how they are used. You will study 2 set works in detail.

Mrs G Williams
Head of Expressive Arts Faculty

CAREERS IN MUSIC

This qualification provides a suitable foundation for the study of Music at A-level. It will also provide a satisfying and worthwhile course of study for you if you choose not to progress to study further. In the future, Creativity is going to be one of the most important and in-demand skills at work (World Economic Forum). When business leaders across the world were surveyed, they voted Creativity as the most important workplace capability to help their businesses survive and grow. Importantly, studying music will develop many transferable skills including communication, presentation skills, team working, leadership, focus, refinement, creativity and self-confidence.



If you
want to know more ask
me about the course



Course Code: [60068206](#)



Agored Cymru Level 2 Extended Certificate

Agored Cymru Level 2 Extended Certificate in Learning in the Outdoors (Outdoor Activities)

What will I learn?

- This course can help you learn:
- About the types of jobs you could work in and what it would be like to work in adventure education.
- About team dynamics, risk assessment and making decisions when working with others safely in an adventurous environment.
- Managing your environmental impact in the outdoors and understanding the diversity in North Wales.
- Improving your personal performance and the role of coaching and instructing to inspire others.

How will I learn?

This course is a mix of classroom and practical indoor and outdoor tasks and you will get a chance to prepare and practise your skills before you are assessed so that you know and understand what you will have to do. Activities you will do include indoor and outdoor climbing, bouldering, Powerboating, Bivvy nights and expeditions that can lead to the Duke of Edinburgh Bronze Award.

How will I be assessed?

You will produce coursework which is assessed mainly by your teacher, which will involve keeping a log book of activities completed.

No previous experience is required, however you will have to take responsibility for your personal fitness and organisation.

What happens after this course?

This course is the precursor to the BTEC Level 3 which can be studied at Coleg Menai or Llandrillo Colege.

Job Ideas

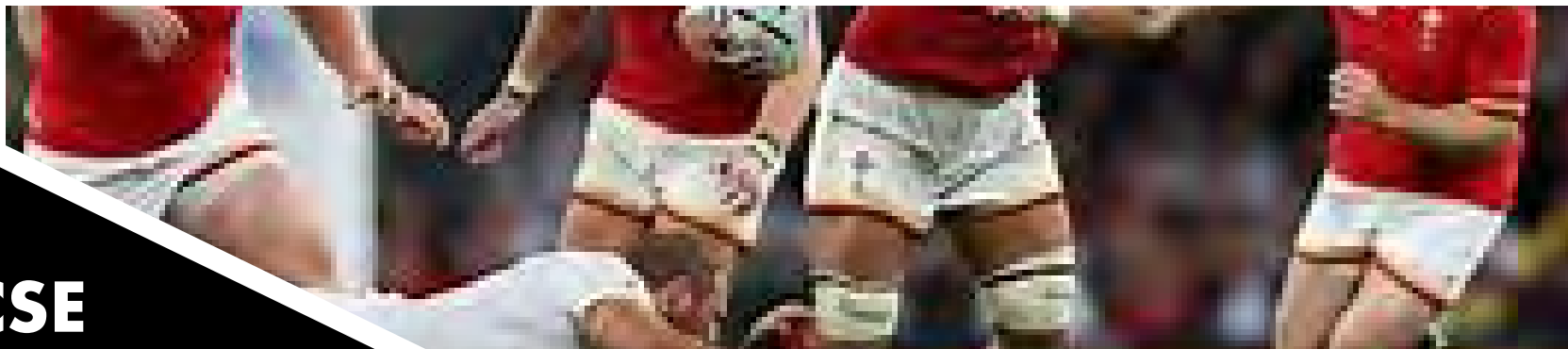
Freelance outdoor instructor, Travel Guide, Health & Safety, Environmental Industry.



*If you
want to know more ask
me about the course*

Mr H Healy
Teacher of Humanities & ODA

Course Code: [60181485](#)



Physical Education GCSE

What will I learn?

This GCSE subject is intended to encourage purposeful and enjoyable practice and study of Physical Education. You will select practical activities that take account of previous achievement, personal interest and individual levels of motivation, whilst encouraging you to develop a commitment to an active lifestyle.

How will I learn?

Two thirds of lessons will be practical with theory (written) topics covered in the other lessons. Whenever applicable, theoretical aspects will be taught using practical activities, e.g. reasons for and methods of fitness testing.

What will I need?

You need to be enthusiastic about this subject and competent in a number of different practical activities. You will have more time participating in all aspects of Physical Education than any previous years.



Ms M Caulfield

Head of Health & Wellbeing Faculty

How will I be assessed?

There are two units that will form your assessment for this subject.

Unit 1: 2 hour written examination - 50%

Learners will be assessed through a range of short and extended questions based on audio visual stimuli and other sources.

Unit 2: The active participant in physical education - 50% Learners will be assessed in three different activities in the role of performer in at least one individual sport, one team sport and one other. One activity will be a major activity which will have a personal fitness programme linked to the activity.

What happens after this course?

Pupils can carry on their sport studies in our new course level 3 sport. Last year 100% of pupils went onto to University.

Job Ideas

Physiotherapist, Professional sports player, coach, manager, Sports Psychologist, public services, armed services, Physical Education teacher, personal trainer, dietician, sport scientist, performance analyst, nurse,

Course Code: C200QS



Sociology GCSE



The aim of the GCSE Sociology course is to develop an understanding and critical awareness of the social world around us.

What will I learn?

You will study a variety of topics encouraged to explore and debate contemporary social issues, challenge assumptions and question everyday social phenomena.

In Year 10 you will consider how human beings acquire their identity and gain a deeper, more theoretical understanding of the social world. Topics include:

1. Cultural Transmission, Socialisation and Identity
2. Role of the Family
3. Role of Education
4. Research Methods

If you
want to know more ask
me about the course

Miss T. Jones
Subject Lead of Sociology



In Year 11 you will enhance your awareness of the social world through examining social structures and their influence on human behaviour. Topics include:

1. Social Differentiation, Power and Stratification
2. Crime and Deviance
3. Research Design

How will I be assessed?

There is no coursework for GCSE Sociology. You will be assessed over 2 written exams (worth 50% each) at the end of Year 11. Exams are a mixture of short answer, structured questions and extended-response writing.

What happens after this course?

A Level Sociology is offered here at Ysgol Friars.

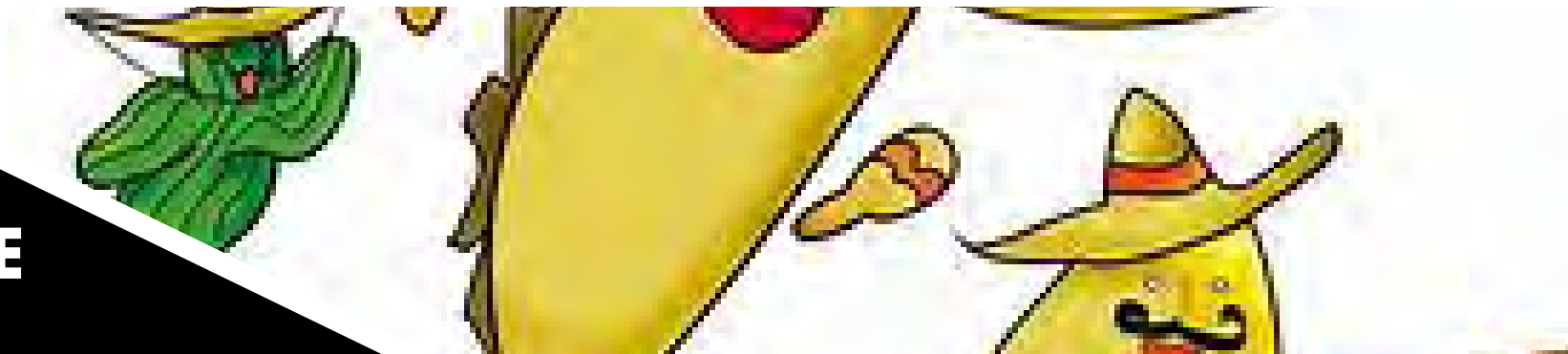
Job Ideas

Advice Worker; Charity; Civil Service; Community Development; Counselling; Housing Officer; Human Resources; Journalist; Marketing; Police Officer; Social Researcher; Social work; Support Worker; Teacher/Lecturer; Youth Worker

Course Code: [C0007970](#)



Spanish GCSE



What will I learn?

This course will help you to:

- develop understanding of the language in a variety of contexts
- develop knowledge of the language and language learning skills
- develop the ability to communicate effectively in the language
- develop awareness and understanding of countries and communities where the language is spoken

How will I learn?

Students will consolidate and extend their knowledge and use of the language by developing the four skills of listening, speaking, reading and writing within the following three broad themes:

language for leisure and wellbeing
language for travel
language for study and work

Miss H Darroch
Teacher of International
Languages (IL)



If you
want to know more ask
me about the course

How will I be assessed?

The new GCSE offers a combination of assessments. There are two Non-Examination Assessments conducted in during a specific NEA window set by WJEC during the second year of the course (45%) as well as two exams (55%) at the end of Year 11.

Speaking: NEA - 30%

Reading and Writing: NEA - 15%

Listening: Written exam - 20%

Reading and Writing: 35%

What happens after this course?

Students with at least a B grade at GCSE have the chance of continuing their study of Spanish at AS and A Level through E-sgol.

Gaelle Lee - Teacher of International Languages (IL)

Job Ideas

Remember: 75% of the world population do not speak English and 60 %of British businesses trade with non-English speaking countries

Air cabin crew, Banker, Bilingual Secretary, Customs and Excise Officer, Diplomatic Service Careers, Engineer, Holiday Rep, Tour Guide, Hotel Manager, Immigration Officer, Importer/Exporter, Industrial Buyer, Interpreter, Overseas Student Recruitment Officer, Sales and Marketing, Social Worker, Teacher, Teaching English as a Foreign language, Tourist Information Officer, Translator, Work in Airports and Ferry Ports, Working for multi-national companies...

Course Code:



Religious Studies



What will I learn?

If you enjoy exploring big questions about life, morality, and what makes us human, then this course is for you! GCSE Religious Studies dives into some of the most fascinating and thought-provoking topics, including:

- Religious and non-religious worldviews – Discover how different beliefs shape lives, and societies.
 - Hot topics in ethics and morality – Debate issues like human rights, justice, and the environment, and learn how people with different beliefs approach these challenges.
 - Philosophy and life's biggest questions – Does God exist? What happens after we die? What makes something right or wrong? Engage in exciting discussions and develop your own perspectives.
 - Identity and culture – Explore how faith and belief influence our identities, communities, and the world around us.
 - Real-world impact – See how religion and belief systems shape laws, politics, and global events.
- This isn't just about learning facts—it's about thinking for yourself, engaging in discussions, and gaining a deeper understanding of the world.

How will I learn?

The course is designed to be engaging and interactive, using a variety of learning methods to develop pupils' understanding. These include:

- Discussion and Debate: Pupils will explore and express their views on important ethical and philosophical issues.
- Case Studies: Real-life examples will help pupils see how beliefs influence actions and decisions.
- Group Work & Collaboration: Encouraging teamwork and diverse viewpoints.
- Independent Research: Pupils will investigate topics of interest, developing skills in critical thinking and analysis.
- Use of Multimedia: Documentaries, podcasts, and online resources will support learning and make complex topics accessible.



Ms B Williams
Religious Studies

What will I need?

You will need to be an open-minded person who keeps up to date with current affairs as well as enjoys taking part in class discussions. A strong work ethic will help you be successful in your assessments and the ability to consider other opinions to inform your own.

How will I be assessed?

Unit 1: Religious and non-religious beliefs, teachings and practices

Written examination: 1 hour 15 minutes

30% of qualification

Unit 2: Religion and relationships

Non-examination assessment: 6 hours

20% of qualification

Unit 3: Roles, rights and responsibilities

Written examination: 1 hour 15 minutes

30% of qualification

Unit 4: Religion and human rights

Non-examination assessment: 6 hours

20% of qualification

What happens after this course?

Many students who enjoy Religious Studies will go on to study Religion, Philosophy and Ethics at A Level. It's an exciting opportunity to learn about Buddhist beliefs, which is a completely new religion from what they've studied at GCSE, as well as engage in philosophical debates about God, creation and many ethical dilemmas.

Job ideas

Lawyer, Journalist, Doctor, Nurse, Teacher, Social worker, Politician, Psychologist, Human Resources, Business ethics, Policing, Counselling.

Course Code: 3320



Mathematics & Numeracy (Double Award)

In GCSE Mathematics & Numeracy, you will build on the knowledge and understanding you have of topics within number, algebra, geometry, and data. You will be taught the key financial aspects of everyday adult life, such as dealing with payslips, bills, and savings. A good understanding of the content of this qualification is the perfect platform to those hoping to follow a STEM career.

WHAT WILL I STUDY?

The course has 3 units:

UNIT 1: Financial Mathematics and Other Applications of Numeracy

In this unit you will learn life lessons that will help you become a financially well-informed adult. Think about terms or acronyms you may have heard about like 'National Insurance', 'VAT' or 'AER' – these will become familiar to you. Financial opportunities and pitfalls will be addressed, and you will learn how to read important documents like payslips, bills and bank statements. All sorts of other real-world contexts will also be taught and assessed, making this unit relevant and interesting.

UNIT 2: Non-calculator

You will explore concepts where you won't need your calculator in this unit. You will deepen your understanding of probability and explore new ideas within algebra and geometry, like quadratic graphs and circle theorems.

UNIT 3: Calculator-allowed

This unit has the biggest weighting of all three units, and you can have your calculator by your side. There is lots of data handling and statistics in this unit as well as new geometry concepts such as Pythagoras' Theorem and Trigonometry

HOW WILL I BE ASSESSED?

UNIT 1: Financial Mathematics and Other Applications of Numeracy	
Higher tier	Foundation tier
1 hour 45 minutes 80 marks	1 hour 30 minutes 65 marks
Weighting: 30% of the qualification	

UNIT 2: Non-calculator	
Higher tier	Foundation tier
1 hour 45 minutes 80 marks	1 hour 30 minutes 65 marks
Weighting: 30% of the qualification	

UNIT 3: Calculator-allowed	
Higher tier	Foundation tier
2 hours 90 marks	1 hour 45 minutes 75 marks
Weighting: 40% of the qualification	

WHAT SKILLS WILL I DEVELOP?

- You will develop an understanding of the different areas of mathematics and how they relate to each other.
- You will extend your range of mathematical skills and techniques and be able to use and apply them to a range of real-life contexts.
- You will gain a strong foundation in financial mathematics to prepare you for life and work.

CAREERS IN MATHEMATICS

A GCSE in Mathematics and Numeracy can lead to a variety of career paths. These include jobs such as: financial analyst, computer programmer, medical scientist, actuary, software developer, economist, data or research analyst, accountant, teacher.

In addition to the GCSE course, our highest achievers will be given the opportunity to complete Additional Maths modules. This course runs parallel to the Maths and Numeracy GCSE.

Course Code:



GCSE Core Cymraeg



Do you want to be able to understand and use Welsh, the language of Wales, confidently and spontaneously? Do you want to develop a valuable skill and use Welsh in further study, in the workplace and in your communities? Do you want to be a part of the government's aim and be one of the million Welsh speakers by 2050? This is a qualification that can foster your curiosity, develop your language learning skills and strategies, and open doors to further study and future jobs.

WHAT WILL I STUDY?

You will study three broad themes of 'cynefin', identity and culture and within these themes you will learn:

- about the value of the Welsh language socially and in the world of work
- about its use in Wales and around the world
- how to understand and use Cymraeg with others in a spontaneous and confident way
- how to develop skills for work and life
- how to respond creatively to literature.

UNIT 1 (Responding to a Visual Stimulus) & UNIT 2 (Responding to Various Sources)

In these speaking and listening units you will learn how to understand and use Welsh with others in a spontaneous and confident way by:

- watching visual stimuli (Unit 1)
- looking at various sources for example, graph/ chart, facts and/or statistics and images (Unit 2)

UNIT 3 (Preparing for the Future) & UNIT 4 (Literature and Creative Writing)

In these units you will develop both skills, reading and writing, by responding to non-verbal reading and writing texts, practicing and responding to a variety of language forms, as well as:

- learn essential skills for the future such as translanguaging and translating (Unit 3)
- study short stories and set poems (Unit 4) All units will be based on the three broad themes.

HOW WILL I BE ASSESSED?

EXAMINATION

There will be two written examinations:

Unit 3 - 1 hour 30 minutes; 100 marks; 25% of qualification.

Unit 4 - 1 hour 30 minutes; 100 marks; 25% of qualification.

There will be a variety of reading tasks with non-verbal and written responses in both units along with descriptive, persuasive, poetic writing and express opinions tasks (Unit 3) and creative writing tasks (Unit 4).

In Unit 3, translanguaging and translating tasks will be assessed in each series. In Unit 4, one set text (from the two poems and two short stories) will be assessed in each series. You will be told before the exam (Unit 4) which set text will be used in each series.

NON-EXAMINATION ASSESSMENT

There will be two non-examination assessments:

Unit 1 - one oral assessment for pairs (6-8 minutes)/ group of three (8-10 minutes); 50 marks; 25% of qualification.

Unit 2 - one oral assessment for pairs (6-8 minutes)/ group of three (8-10 minutes); 50 marks; 25% of qualification.

WHAT SKILLS WILL I DEVELOP?

- Speaking and Listening Skills

You will develop your speaking and listening

skills to be able to communicate, interact, express and justify opinions and ask and respond effectively to questions.

- Reading and Writing skills

You will develop your reading and writing

skills to be able to understand and respond to different types of written language in various forms including work-related language and responding to literature.

- Analysing skills

You will develop your analytical skills to

respond critically, evaluate relevant points and develop ideas in texts and spoken communication.

CAREERS IN CORE CYMRAEG

Jobs advertised in Wales often require the ability to speak Welsh as essential or desirable. If you have a GCSE Core Cymraeg qualification and if the other candidates applying for the post do not have this qualification, you have a head start.

The ability to speak Welsh is important and advantageous in all areas including education, health and care, the government, media and entertainment, sport, law, marketing and much more. You can even get a job in Patagonia in South America if you can speak Welsh!

Course Code:



TGAU Cymraeg Craidd



Ydych chi eisiau gallu deall a defnyddio'r Gymraeg, iaith Cymru, yn hyderus a digymell? Ydych chi eisiau datblygu sgll gwerthfawr ar gyfer defnyddio'r Gymraeg mewn astudiaethau pellach, yn y gweithle ac yn eich cymunedau? Ydych chi eisiau bod yn rhan o nod y llywodraeth a bod yn un o'r miliwn o siaradwyr Cymraeg erbyn 2050? Dyma gymhwyster fydd yn gallu meithrin eich chwilfrydedd, datblygu eich sgiliau a strategaethau dysgu iaith ac agor drysau i astudiaethau pellach a swyddi yn y dyfodol.

BETH FYDDAF YN EI ASTUDIO?

Byddwch chi'n astudio tair thema eang sef cynefin, hunaniaeth a diwylliant ac o fewn y themau hyn byddwch yn dysgu:

- am werth y Gymraeg yn gymdeithasol ac yn y byd gwaith
- am ei defnydd yng Nghymru ac ar draws y byd
- sut i ddeall a defnyddio'r Gymraeg gydag eraill yn ddigymell a hyderus
- sut i ddatblygu sgiliau ar gyfer bywyd a gwaith
- sut i ymateb yn greadigol i lenyddiaeth.

UNED 1 (Ymateb i Sbardun Gweledol) UNED 2 (Ymateb i Ffynonellau Amrywiol)

Yn yr unedau siarad a gwrando yma byddwch yn dysgu sut i ddeall a defnyddio'r Gymraeg gydag eraill mewn ffordd ddigymell a hyderus drwy:

- wyllo sbardunau gweledol (Uned 1)
- edrych ar ffynonellau amrywiol er enghraifft, graff / siart, ffeithiau a / neu ystadegau a delweddau (Uned 2)

UNED 3 (Paratoi at y Dyfodol) UNED 4 (Llenyddiaeth a Chreadigol)

Yn yr unedau yma byddwch yn datblygu'r ddwy sgll, darllen ac ysgrifennu, drwy ymateb i destunau darllen ac ysgrifennu di-eiriau, ymarfer ac ymateb i amrywiaeth o ffurfiau iaith, ynghyd a:

- dysgu sgiliau hanfodol ar gyfer y dyfodol fel trawsieithu a chyfieithu (Uned 3)
- astudio straeon byrion a cherddi gosod (Uned 4) Bydd pob uned yn seiliedig ar y tair thema eang.

SUT BYDDAF YN CAEL FY ASESU?

ARHOLIAD - Bydd dau arholiad ysgrifenedig:

Uned 3 - 1 awr 30 munud; 100 mare; 25% o'r cymhwyster.

Uned 4 - 1 awr 30 munud; 100 mare; 25% o'r cymhwyster.

Bydd amrywiaeth o dasgau darllen gydag ymatebion di-eiriau ac ysgrifenedig yn y ddwy uned ynghyd a thasgau ysgrifennu disgrifadol, perswadiol, beiriniadol a mynegi barn (Uned 3) a thasgau ysgrifennu creadigol (Uned 4).

Yn Uned 3 bydd tasgau trawsieithu a chyfieithu yn cael eu hasesu ymhob cyfres. Yn Uned 4 bydd un testun gosod (o'r ddwy gerdd a'r ddwy stori fer) yn cael ei asesu ymhob cyfres. Byddwch chi'n cael gwybod cyn yr arholiad (Uned 4) pa destun gosod fydd yn cael ei ddefnyddio ymhob cyfres.

ASESIAD DI-ARHOLIAD

Bydd dau asesiad di-arholiad:

Uned 1 - un asesiad llafar par (6-8 munud) / grwp o dri (8-10 munud); 50 mare; 25% o'r cymhwyster.

Uned 2 - un asesiad llafar par (6-8 munud) / grwp o dri (8-10 munud); 50 mare; 25% o'r cymhwyster.

PA SGILIAU FYDDAF YN EU DATBLYGU?

- Sgiliau Siarad a Gwrando

Byddwch yn datblygu eich sgiliau siarad a gwrando er mwyn gallu cyfathrebu, rhyngweithio, mynegi a chyfiawnhau barn a gofyn ac ymateb yn effeithiol i gwestiynau.

- Sgiliau Darllen ac Ysgrifennu

Byddwch yn datblygu eich sgiliau darllen ac ysgrifennu er mwyn gallu deall ac ymateb i fathau gwahanol o iaith ysgrifenedig ar wahanol ffurfiau gan gynnwys iaith y byd gwaith ac ymateb i lenyddiaeth.

- Sgiliau Dadansoddi

Byddwch yn datblygu eich sgiliau dadansoddi i ymateb yn feirniadol, gwerthuso pwyntiau perthnasol a datblygu syniadau mewn testunau a chyfathrebu llafar.

GYRFAOEDD YM MAES CYMRAEG CRAIDD

TGAU CYMRAEG CRAIDD

Mae swyddi sy'n cael eu hysbysebu yng Nghymru yn aml yn gofyn am y gallu i siarad Cymraeg fel rhywbeth hanfodol neu ddymunol. Os oes gennych chi gymhwyster TGAU Cymraeg Craidd a bod gan yr ymgeiswyr eraill sy'n ceisio am y swydd ddim y cymhwyster hwn, yna rydych chi ar y blaen i'r lleill cyn dechrau.

Mae'r gallu i siarad Cymraeg yn bwysig ac o fantais ymhob maes gan gynnwys addysg, iechyd a gofal, y llywodraeth, y cyfryngau ac adloniant, chwaraeon, y gyfraith, marchnata a llawer mwy. Gallwch hyd yn oed gael swydd ym Mhatagonia yn ne America os ydych chi'n gallu siarad Cymraeg!

Course Code:



GCSE Cymraeg Language and Literature (Double Award)



INTRODUCTION

"The Welsh language is one of the treasures of Wales. It is part of what defines us as a people and as a nation." (Welsh Government, Cymraeg 2050: A million Welsh speakers, 2017, p.2). It is the Welsh Government's ambition to reach the target of 'a million Welsh speakers' by 2050 and you are one of the million! This is a new and exciting qualification in which you will be studying a wealth of literature that will ignite your imagination, build your enthusiasm and prepare you to communicate and live through the medium of Welsh.

WHAT WILL I STUDY?

UNIT 1 (Narrative) - in this unit you will study a Welsh contemporary novel and learn how to appreciate the contents, characters, themes and plot. You will also respond to the novel in a personal and creative way.

UNIT 2 (Identity) - in this unit you will study visual text

i.e. a film or television programme, and you will form a group discussion with regards to the plot, characters and the themes. You will develop your listening and responding skills as well as the skill of communicating confidently in Welsh.

UNIT 3 (Attitudes) - in this unit you will study a collection of poetry to learn how to appreciate their contents, style and messaging. You will also individually present information orally on the text of your choosing.

UNIT 4a (Linguistic Connections) - in this unit you will read a variety of written texts and you will learn how to combine and summarise information. You will also respond creatively to the texts in a variety of different forms.

HOW WILL I BE ASSESSED?

EXAM - There will be two written examinations worth 60% of the Single Award qualification for units 1 and 4a. The two exams will be 90 minutes long and they will include a variety of comprehension questions, extended responses and the opportunity to write creatively.

NON-EXAMINATION ASSESSMENT - There will be two non-examination assessments worth 40% of the Single Award qualification for units 2 and 3. There will be two oral assessments (individual and group) and one written assessment (coursework).

WHAT SKILLS WOULD I DEVELOP?

GCSE Cymraeg Language and Literature is a core subject which will help you to develop the variety of skills listed below:

- the skill and strategy of learning a language
- reading, listening, speaking and writing skills
- skills related to interacting as part of a pair or group whilst listening to others, expressing an opinion and form conclusions
- written creative skills by reading a wide range of forms
- literary appreciation skills
- public speaking skills
- foster enthusiasm for the Welsh language for further study, in the workplace and in the community.

CAREERS IN THE 'CYMRAEG LANGUAGE AND LITERATURE' FIELD

GCSE Cymraeg Language and Literature - the purpose of this qualification is to inspire you to be citizens that take pride in your nation's culture, history and language. Jobs advertised in Wales often require the ability to speak Welsh as essential or desirable. If you have a GCSE Cymraeg Language and Literature qualification you already have an advantage over others! The ability to speak Welsh is important and advantageous in all areas including education, health and care, the government, media and entertainment, sport, law, marketing and much more. The journey to a million Welsh speakers by 2050 is an exciting one and you are a part of it.

Course Code:



TGAU Cymraeg: Iaith a Llenyddiaeth (Dwyradd)



CYFLWYNIAD

"Mae'r Gymraeg yn un o drysorau Cymru. Mae'n rhan o'r hyn sy'n ein diffinio fel pobl ac fel cenedl." (Llywodraeth Cymru, Cymraeg 2050: Miliwn o siaradwyr, 2017, t.2). Uchelgais Llywodraeth Cymru yw cyrraedd y targed 'miliwn o siaradwyr Cymraeg' erbyn 2050 ac rydych chi'n un o'r miliwn! Dyma gymhwyster cyffrous, newydd ble byddwch yn astudio cyfoeth o lenyddiaeth fydd yn sbarduno'r dychmyg, yn meithrin eich chwilfrydded ac yn eich paratoi i gyfathrebu a byw drwy gyfrwng y Gymraeg.

BETH FYDDAF YN EI ASTUDIO?

UNED 1 (Naratif) - yn yr uned hon byddwch yn astudio nofel gyfoes Gymraeg ac yn dysgu sut i werthfawrogi'r cynnwys, cymeriadau, themâu a phlot. Byddwch yn ymateb yn bersonol a chreadigol i'r nofel hefyd.

UNED 2 (Hunaniaeth) - yn yr uned hon byddwch yn astudio testun gweledol h.y. ffilm neu raglen deledu, ac yn cynnal trafodaeth grŵp i drafod y plot, cymeriadau a themâu. Byddwch yn datblygu eich sgiliau gwrandao ac ymateb yn ogystal â'r sgil o gyfathrebu'n hyderus yn y Gymraeg.

UNED 3 (Agweddau) - yn yr uned hon byddwch yn astudio casgliad o gerddi er mwyn dysgu sut i werthfawrogi eu cynnwys, arddull a neges. Byddwch hefyd yn cyflwyno gwybodaeth ar lafar yn unigol ar destun o'ch dewis.

UNED 4b (Cysylltiadau leithyddol) - yn yr uned hon byddwch yn darllen amrywiaeth o destunau ysgrifenedig ac yn dysgu sut i gyfuno a chrynhof gwybodaeth. Byddwch hefyd yn ymateb yn greadigol i'r testunau mewn amrywiaeth o ffurfiau gwahanol.

UNED 5 (Ymateb a Chreu) - yn yr uned hon byddwch yn ymateb a rhyngweithio ar lafar fel grŵp i destun cyfoes gan ddatblygu'ch sgiliau mynegi barn. Byddwch hefyd yn cael y cyfle i ysgrifennu'n greadigol fel rhan o'r gwaith cwrs.

UNED 6 (Cyfleu Ystyr) - yn yr uned hon byddwch yn astudio casgliad o straeon byrion ac yn dysgu sut i gymharu a gwerthfawrogi testunau llenyddol.

SUT BYDDAF YN CAEL FY ASESU?

ARHOLIAD - Bydd tri arholiad ysgrifenedig werth 60% o'r cymhwyster Dwyradd yn unedau 1, 4b a 6. Bydd arholiad unedau 1 a 6 yn 90 munud o hyd, gydag arholiad uned 4b yn 120 munud o hyd. Bydd yr arholiadau'n cynnwys

amrywiaeth o gwestiynau darllen a deall, atebion estynedig a chyfle i ysgrifennu'n greadigol.

ASESIAD DI-ARHOLIAD - Bydd pum asesiad di-arholiad werth 40% o'r cymhwyster Dwyradd yn unedau 2, 3 a 5. Bydd dau asesiad llafar grŵp, un asesiad llafar unigol a dau asesiad ysgrifenedig (gwaith cwrs).

PA SGILIAU FYDDAF YN EU DATBLYGU?

Mae TGAU iaith a Llenyddiaeth Gymraeg yn bwnc craidd fydd yn eich helpu i ddatblygu'r amrywiaeth o sgiliau isod:

- datblygu sgiliau a strategaethau dysgu iaith
- datblygu sgiliau darllen, gwrandao, siarad ac ysgrifennu
- datblygu sgiliau rhyngweithio mewn par neu grŵp gan wrando ar eraill, mynegi barn a dad i gasgliadau
- datblygu sgiliau creadigol yn ysgrifenedig a thrwy ddarllen ystod eang o ffurfiau
- datblygu sgiliau gwerthfawrogi llenyddiaeth
- datblygu sgiliau siarad cyhoeddus
- meithrin chwilfrydded ynglyn a'r Gymraeg ar gyfer astudiaethau pellach, yn y gweithle a'r gymuned.

GYRFAOEDD YM MAES 'IAITH A LLENYDDIAETH GYMRAEG'

TGAU iaith a Llenyddiaeth Gymraeg - diben y cymhwyster hwn yw eich ysbrydoli i fad yn ddinasyddion sy'n ymfalchïo yn niwylliant, hanes ac iaith eich gwlad. Mae swyddi yng Nghymru yn aml yn gofyn am y gallu i siarad Cymraeg fel rhywbeth hanfodol neu ddymunol. Os oes gennych chi gymhwyster TGAU Cymraeg iaith a Llenyddiaeth rydych chi ar y blaen i'r lleill cyn dechrau! Mae'r gallu i siarad Cymraeg yn bwysig ac o fantais ym mhob maes gan gynnwys addysg, iechyd a gofal, y llywodraeth, y cyfryngau, adloniant, chwaraeon a llawer mwy. Mae'r daith at y miliwn o siaradwyr Cymraeg erbyn 2050 yn un cyffrous ac rydych chi'n rhan ohoni.

Course Code:



GCSE Cymraeg Language and Literature (Single Award)



INTRODUCTION

"The Welsh language is one of the treasures of Wales. It is part of what defines us as a people and as a nation." (Welsh Government, Cymraeg 2050: A million Welsh speakers, 2017, p.2). It is the Welsh Government's ambition to reach the target of 'a million Welsh speakers' by 2050 and you are one of the million! This is a new and exciting qualification in which you will be studying a wealth of literature that will ignite your imagination, build your enthusiasm and prepare you to communicate and live through the medium of Welsh.

WHAT WILL I STUDY?

UNIT 1 (Narrative) - in this unit you will study a Welsh contemporary novel and learn how to appreciate the contents, characters, themes and plot. You will also respond to the novel in a personal and creative way.

UNIT 2 (Identity) - in this unit you will study a visual text i.e. a film or television programme, and as a group you will undertake a discussion of the plot, characters and the themes. You will develop your listening and responding skills as well as the skill of communicating confidently in Welsh.

UNIT 3 (Attitudes) - in this unit you will study a collection of poetry to learn how to appreciate their content, style and messaging. You will also individually present information orally on the text of your choosing.

UNIT 4b (Linguistic Connections) - in this unit you will read a variety of written texts and you will learn how to combine and summarise information. You will also respond creatively to the texts in a variety of different forms.

UNIT 5 (Respond and Create) - in this unit you will respond and interact orally as a group to a contemporary text whilst also developing your skills in terms of expressing your opinions. You will also have the opportunity to write creatively as part of the coursework.

UNIT 6 (Conveying Meaning) - in this unit you will study a collection of short stories and you will learn how to compare and appreciate literary texts.

HOW WILL I BE ASSESSED?

EXAM - There will be three written examinations worth 60% of the Double Award qualification for units 1, 4b and 6. The exams for Units 1 and 6 will be 90 minutes long, and the Unit 4 exam will be 120 minutes long. The exams will consist of a variety of comprehension questions, extended answers and the opportunity to write creatively.

NON-EXAMINATION ASSESSMENT - There will be five non-examination assessments worth 40% of the Double Award qualification for units 2, 3 and 5. There will be two group oral assessments, one individual oral assessment and two written assessments (coursework).

WHAT SKILLS WOULD I DEVELOP?

GCSE Cymraeg Language and Literature is a core subject which will help you to develop the variety of skills listed below:

- the skills and strategy of learning a language
- reading, listening, speaking and writing skills
- skills related to interacting as part of a pair or group whilst listening to others, expressing an opinion and forming conclusions
- written creative skills by reading a wide range of forms
- literary appreciation skills
- public speaking skills
- foster enthusiasm for the Welsh language for further study, in the workplace and in the community.

CAREERS IN THE 'CYMRAEG LANGUAGE AND LITERATURE' FIELD

GCSE Cymraeg Language and Literature - the purpose of this qualification is to inspire you to be citizens that take pride in your nation's culture, history and language. Jobs advertised in Wales often require the ability to speak Welsh as essential or desirable. If you have a GCSE Cymraeg Language and Literature qualification you already have an advantage over others! The ability to speak Welsh is important and advantageous in all areas including education, health and care, the government, media and entertainment, sport, law, marketing and much more. The journey to a million Welsh speakers by 2050 is an exciting one and you are a part of it.

Course Code:



TGAU Cymraeg: Iaith a Llenyddiaeth (Gradd Unigol)



CYFLWYNIAD

"Mae'r Gymraeg yn un o drysorau Cymru. Mae'n rhan o'r hyn sy'n ein diffinio fel pobl ac fel cenedl." (Llywodraeth Cymru, Cymraeg 2050: Miliwn o siaradwyr, 2017, t.2). Uchelgais Llywodraeth Cymru yw cyrraedd y targed 'miliwn o siaradwyr Cymraeg' erbyn 2050 ac rydych chi'n un o'r miliwn! Dyma gymhwyster cyffrous, newydd ble byddwch yn astudio cyfoeth o lenyddiaeth fydd yn sbarduno'r dychymyg, yn meithrin eich chwilfrydded ac yn eich paratoi i gyfathrebu a byw drwy gyfrwng y Gymraeg.

BETH FYDDAF YN EI ASTUDIO?

UNED 1 (Naratif) - yn yr uned hon byddwch yn astudio nofel gyfoes Gymraeg ac yn dysgu sut i werthfawrogi'r cynnwys, cymeriadau, themâu a phlot. Byddwch yn ymateb yn bersonol a chreadigol i'r nofel hefyd.

UNED 2 (Hunaniaeth) - yn yr uned hon byddwch yn astudio testun gweledol h.y. ffilm neu raglen deledu, ac yn cynnal trafodaeth grŵp i drafod y plot, cymeriadau a themâu. Byddwch yn datblygu eich sgiliau gwranddo ac ymateb yn ogystal gyfathrebu'n hyderus yn y Gymraeg. â'r sgil o gyfathrebu'n hyderus yn y Gymraeg.

UNED 3 (Agweddau) - yn yr uned hon byddwch yn astudio casgliad o gerddi er mwyn dysgu sut i werthfawrogi eu cynnwys, arddull a neges. Byddwch hefyd yn cyflwyno gwybodaeth ar lafar yn unigol ar destun o'ch dewis.

UNED 4a (Cysylltiadau leithyddol) - yn yr uned hon byddwch yn darllen amrywiaeth o destunau ysgrifenedig ac yn dysgu sut i gyfuno a chrynhof gwybodaeth. Byddwch hefyd yn ymateb yn greadigol i'r testunau mewn amrywiaeth o ffurfiau gwahanol.

SUT BYDDAF YN CAEL FY ASESU?

ARHOLIAD - Bydd dau arholiad ysgrifenedig werth 60% o'r cymhwyster Gradd Ungiol yn unedau 1 a 4a. Bydd y ddau arholiad yn 90 munud o hyd ac yn cynnwys amrywiaeth o gwestiynau darllen a deall, atebion estynedig a chyfle i ysgrifennu'n greadigol.

ASESIAD D1-ARHOLIAD - Bydd dau asesiad di-arholiad werth 40% o'r cymhwyster Gradd Unigol yn unedau 2 a 3. Bydd dau asesiad llafar (unigol a gr ŵp) ac un asesiad ysgrifenedig (gwaith cwrs).

PA SGILIAU FYDDAF YN EU DATBLYGU?

Mae TGAU Iaith a Llenyddiaeth Gymraeg yn bwnc craidd fydd yn eich helpu i ddatblygu'r amrywiaeth o sgiliau isod:

- datblygu sgiliau a strategaethau dysgu iaith
- datblygu sgiliau darllen, gwranddo, siarad ac ysgrifennu
- datblygu sgiliau rhyngweithio mewn par neu grŵp gan wrando ar eraill, mynegi barn a dad i gasgliadau
- datblygu sgiliau creadigol yn ysgrifenedig a thrwy ddarllen ystod eang o ffurfiau
- datblygu sgiliau gwerthfawrogi llenyddiaeth
- datblygu sgiliau siarad cyhoeddus
- meithrin chwilfrydded ynglyn a'r Gymraeg ar gyfer astudiaethau pellach, yn y gweithle a'r gymuned.

GYRFAOEDD YM MAES 'IAITH A LLENYDDIAETH GYMRAEG'

TGAU Iaith a Llenyddiaeth Gymraeg - diben y cymhwyster hwn yw eich ysbrydoli i fad yn ddinasyddion sy'n ymfalchi o yn niwylliant, hanes ac iaith eich gwlad. Mae swyddi yng Nghymru yn aml yn gofyn am y gallu i siarad Cymraeg fel rhywbeth hanfodol neu ddymunol. Os oes gennych chi gymhwyster TGAU Cymraeg iaith a ddinasyddion sy'n ymfalchi o yn niwylliant, hanes ac iaith eich gwlad. Mae swyddi yng Nghymru yn aml yn gofyn am y gallu i siarad Cymraeg fel rhywbeth hanfodol neu ddymunol. Os oes gennych chi gymhwyster TGAU Cymraeg iaith a Llenyddiaeth rydych chi ar y blaen i'r lleill cyn dechrau! Mae'r gallu i siarad Cymraeg yn bwysig ac o fantais ym mhob maes gan gynnwys addysg, iechyd a gofal, y llywodraeth, y cyfryngau, adloniant, chwaraeon a llawer mwy. Mae'r daith at y miliwn o siaradwyr Cymraeg erbyn 2050 yn un cyffrous ac rydych chi'n rhan ohoni.

Course Code: To be confirmed in 2026



(Amended) TWJEC GCSE Separate Sciences (Biology, Chemistry & Physics)

Introduction

WJEC and Qualifications Wales (QW) have made the landmark decision to extend the current WJEC Separate Science Biology, Chemistry and Physics qualifications until 2031. These qualifications will be slightly amended to bring them into line with the new made for Wales WJEC GCSE The Sciences (Double Award) qualification.

At Ysgol Friars, we welcome this decision!

Our pupils will continue to have the opportunity to achieve separate grades in all three sciences until 2031!

Ysgol Friars is a school that prides itself on being able to offer a broadest range of qualifications possible. We believe that all groups of learners should have access to appropriate courses and qualifications that best enable our pupils to make progress into further and higher education.

To that end, we will continue to offer the GCSE Separate Science Qualification to our learners and ensures that Ysgol Friars remains a centre of scientific excellence, both at GCSE and post-16.

The new GCSE Separate Science specification will be published during the 2025-2026 academic year, ready for first teaching in September 2026.

The subject content across all three sciences will remain unchanged for the new qualification. There will be amendments to the scientific enquiry skills assessed but that is all. Please e-mail Mr Varty for further details.

There are two tiers of entry for this qualification: Higher Tier: A* - D Foundation Tier: C - G
The first award of the amended qualification will be in August 2028.

These are unitised qualifications (three units in total in each science). Unit 1 will be taught and externally assessed in Year 10 (May/June examination series) while Unit 2 will be taught and externally assessed in Year 11 (May/June examination series). The Unit 3 practical examinations will be taught and delivered in science classrooms during the first half of the Spring term (January to February) and are externally assessed by WJEC.

What happens after this course?

Once completing the GCSE Separate Science course, we offer four exciting post-16 Level 3 further education courses at Ysgol Friars.

These courses are very popular with post-16 pupils at Ysgol Friars, and the new GCSE qualification will enable pupils to access these courses. These are:

AS/A level Biology

AS/A level Chemistry

AS/A level Physics

Level 3 Medical Science Certificate/Extended Certificate

Career Ideas

Engineer, Chemical technician, Agricultural scientist, Medical doctor, Dentist, Product designer, Forensic chemist, Environmental scientist, Pharmacist, Aviation design/engineering, Biochemist, Toxicologist, Medical scientist, Materials scientist, Pharmacologist, Chemical engineer and many more.

Important message from Mr Varty and the Science Faculty:

The new GCSE Separate Science qualifications are slightly different to the outgoing legacy qualifications. For further details, please e-mail:

vartyd7@hebcymru.net



Mr D Varty
Head of Science



Ms C Shacklady



Mr S Bukoan

Course Code: C00/4968/2



(New) WJEC GCSE The Sciences (Double Award)

Introduction

The GCSE The Sciences (Double Award) qualification will replace the legacy WJEC GCSE in Science qualification from September 2026. Qualifications will be first awarded to our Year 11 pupils in August 2028. The new qualification is underpinned by the Curriculum for Wales framework and has been designed to ensure that learners can continue to make progress towards the four purposes whilst studying for this qualification.

There are two tiers of entry for this qualification: Higher Tier: A* - D Foundation Tier: C - G

The qualification double grade is awarded on an eight-grade scale A*A* - GG. Mixed grades will no longer be awarded e.g. A*A, AB, BC etc. The first award of the qualification will be in August 2028.

This is a unitised qualification (seven units in total). Units 1 - 3 will be taught and externally assessed in Year 10 (May/June examination series) while Units 4 - 6 will be taught and externally assessed in Year 11 (May/June examination series). The Unit 7 practical examinations will be taught and delivered in science classrooms during the first half of the Spring term (January to February) and are externally assessed by WJEC.

How will pupils be assessed?

Units 1 - 3 are tiered externally assessed written examinations marked by WJEC (14.3% of qualification) Units 4 - 6 are tiered externally assessed written examinations marked by WJEC (15.7% of qualification)

Unit 7 examinations are not tiered (10% of qualification) and are externally assessed (marked by WJEC)

Unit 1: Biology – Basis of Life

Unit 2: Chemistry – Chemical Substances and How They Behave

Unit 3: Physics – Forces, Motion and the Universe

Unit 4: Biology – Continuity of Life

Unit 5: Chemistry – Chemical Bonding, Reactions and Resources

Unit 6: Physics – Waves, Electricity and Energy

Unit 7: Scientific Enquiry (Practical Examination)

Important message from Mr Varty and the Science Faculty:

The new GCSE The Sciences (Double Award) qualification is significantly different to the outgoing legacy qualification.

For further details, please e-mail:

vartyd7@hebcymru.net



Mr D Varty
Head of Science

What will pupils learn?

The subject content for GCSE The Sciences qualification will empower pupils by helping them understand how various areas of science connect to their lives on personal, local, national and global levels. Through exploring real-world scientific issues and phenomena, pupils gain insight into how science impacts their everyday experiences and the world around them. The specification content encourages the development of creative thinking and problem-solving skills, allowing pupils to approach challenges with innovation and logic. It also offers valuable opportunities for independent research, fostering curiosity and analytical thinking. Additionally, pupils will be encouraged to apply digital skills and tools throughout their studies, preparing them for a modern, technology-driven world.

Scientific enquiry is fundamental to this qualification. Scientific enquiry is the broad process of asking questions, exploring ideas and seeking understanding about natural phenomena. It involves practical and investigation skills alongside curiosity-driven activities like questioning, observing, gathering information and thinking critically. Scientific enquiry can include everything from formulating research questions to designing and carrying out experiments.

Every unit provides opportunities to enhance scientific enquiry skills. Teaching and learning will incorporate practical experiences for the development of enquiry skills.

What happens after this course?

Once completing the GCSE, The Sciences (Double Award) course, we offer four exciting post-16 Level 3 further education courses at Ysgol Friars. These courses are very popular with post-16 pupils at Ysgol Friars, and the new GCSE qualification will enable pupils to access these courses. These are:

AS/A level Biology

AS/A level Chemistry

AS/A level Physics

Level 3 Medical Science Certificate/Extended Certificate

Career Ideas

Engineer, Chemical technician, Agricultural scientist, Medical doctor, Dentist, Product designer, Forensic chemist, Environmental scientist, Pharmacist, Aviation design/engineering, Biochemist, Toxicologist, Medical scientist, Materials scientist, Pharmacologist, Chemical engineer and many more.

Course Code: C00/5167/2



(New) WJEC GCSE Integrated Science (Single Award)

Introduction

The GCSE Integrated Science (Single Award) qualification will replace two legacy qualifications from September 2026. These legacy qualifications are WJEC GCSE Applied Science (Single Award) and WJEC GCSE Applied Science (Double Award). The new qualification is not designed to enable pupils to progress to Level 3 AS/A level post-16 further education courses, however, pupils can progress onto our popular Level 3 Medical Science courses.

Qualifications will be first awarded to our Year 11 pupils in August 2028. The new qualification is underpinned by the Curriculum for Wales framework and has been designed to ensure that learners can continue to make progress towards the four purposes whilst studying for this qualification.

There are two tiers of entry for this qualification: Higher Tier: A* - D Foundation Tier: C - G
The qualification single grade is awarded on an eight-grade scale A* - G. The first award of the qualification will be in August 2028.

This is a unified qualification (three units in total) and pupils may be entered at different tiers across units.
Unit 1 will be taught and externally assessed in Year 10 (May/June examination series) while Unit 2 will be taught and externally assessed in Year 11 (May/June examination series).

The Unit 3 practical examination will be taught and delivered in science classrooms during the first half of the Spring term (January to February) and is externally assessed by WJEC.

How will pupils be assessed?

Unit 1 is a tiered externally assessed written examination marked by WJEC (45% of qualification).
Unit 2 is a tiered externally assessed written examination marked by WJEC (45% of qualification).
The Unit 3 examination is not tiered (10% of qualification) and is externally assessed (marked by WJEC).

Unit 1: Living on Earth
Unit 2: Science in a Changing World
Unit 3: Scientific Enquiry (Practical Examination)

Important message from Ms Summerfield and the Science Faculty:

The new GCSE Integrated Science (Single Award) qualification is significantly different to the outgoing legacy qualifications. For further details, please e-mail: summerfieldc1@hwbcmru.net



Ms C Summerfield
Teacher of Science

What will pupils learn?

GCSE Integrated Science is designed to empower pupils by demonstrating how scientific concepts across disciplines are interconnected and relevant to everyday life-personally, locally, nationally and globally. Through the investigation of real-world scientific challenges and phenomena, pupils will gain a deeper understanding of how science shapes the world around them.

In Unit 1: Living on Earth, pupils develop scientific knowledge, understanding and skills within the themes of human health, Earth's resources and transport. These help them maintain their health and wellbeing and contribute to a sustainable future. In Unit 2: Science in a Changing World, pupils explore the themes of human influence on Earth, humans in space and identifying unknown substances. These areas help them make informed choices to protect the planet, understand the benefits and challenges of space exploration and apply analytical techniques in practical contexts. Scientific enquiry is fundamental to this qualification. Scientific enquiry is the broad process of asking questions, exploring ideas and seeking understanding about natural phenomena. It involves practical and investigation skills alongside curiosity-driven activities like questioning, observing, gathering information and thinking critically. Scientific enquiry can include everything from formulating research questions to designing and carrying out experiments.

Units 1 and 2 both provide opportunities to enhance scientific enquiry skills. Teaching and learning will incorporate practical experiences for the development of enquiry skills.

What happens after this course?

Once completing the GCSE, The Sciences (Double Award) course, we offer two exciting post-16 Level 3 further education course at Ysgol Friars.

Level 3 Medical Science Certificate (610/3047/8)

Level 3 Medical Science Extended Certificate (610/3048/X)

This courses are very popular with post-16 pupils at Ysgol Friars and is expertly run by Ms Summerfield, Mrs Grove and Mrs Owens.

Career Ideas

The GCSE Integrated Science (Single Award) qualification will enable pupils to progress onto our range of post-16 vocational courses (Level 3 Medical Science Certificate & Level 3 Medical Science Extended Certificate). These post-16 qualifications equip pupils with the scientific knowledge and understanding that support progression to a range of job roles within health care. Alternatively, there would be opportunities for pupils to progress to job roles within the physiological sciences. A significant proportion of career opportunities in these sectors are at degree level. When supported by other appropriate post-16 qualifications, the Level 3 Medical Science Certificates will enable progression to higher education in a range of Applied Science programmes, such as biomedical sciences, life sciences and physiology.

Course Code: 601/7522/9



AQA Entry Level Certificate Science (Single Award & Double Award)

Introduction & Background

The AQA Entry Level Certificate Science qualification will replace the legacy WJEC Entry Level Certificate Science qualification from September 2026.

AQA Education (formally the Assessment and Qualification Alliance), is an awarding body in England, Wales and Northern Ireland that offers a wide range of GCSE and post-16 qualifications.

From September 2026, WJEC and Qualifications Wales have decided to narrow their curriculum offer for 14-16 learners in Wales by discontinuing the Entry Level Certificate Science qualification.

Ysgol Friars is a school that prides itself on being able to offer a broadest range of qualifications possible. We believe that all groups of learners should have access to appropriate courses and qualifications that best enable our pupils to make progress into the post-16 world.

To that end, we have taken the decision to offer the AQA Entry Level Certificate for those pupils who need a broader curriculum offer in science.

Why choose AQA ELC for Science?

AQA design qualifications to enable students to engage, explore, enjoy and succeed in science. Entry Level Certificates (ELCs) are nationally recognised qualifications which give students the opportunity to achieve a certificated award. AQA use straightforward language in their assessments to allow pupils to focus on the science and achieve the results they deserve.

The AQA ELC equips students with skills and knowledge transferable to both educational and career settings and provides a worthwhile course for pupils of various ages and from diverse backgrounds in terms of general education and lifelong learning.

Important message from Ms Summerfield and the Science Faculty:

The new AQA Entry Level Certificate qualification is significantly different to the outgoing legacy WJEC Entry Level Certificate qualification. For further details, please e-mail: summerfieldc1@hwbcymru.net

How will the ELC be awarded?

This qualification is linear, which means that pupils submit their assessments end of the course in Year 11. Assessment is through completion of the Externally-set assignments (ESAs) and Teacher-devised assignments (TDAs). ESAs are short 45 minutes written tests (20 marks maximum) and take place in a classroom under high teacher control, like a mini exam. TDAs take place in classrooms under medium teacher control, like pieces of coursework or Non-Examined Assessments (NEAs). There is no time limit for TDAs (15 marks maximum) and they include a short piece of practical work.

The ELC Single Award certificate is awarded when pupils complete three ESAs and three TDAs. Two assessments from a mixture of the six components.

The ELC Double Award Certificate is awarded when pupils complete six ESAs and six TDAs. Two assessments from all six components.

Both the Single and Double Award Certificates have three levels of award (Level 1, Level 2 & Level 3).
Please e-mail Ms Summerfield for further details.

What will pupils learn?

The specification comprises six components. Two biology, two chemistry and two physics. Each component has two assessments: one externally set ESA and one internally set TDA.

- Component 1 – Biology: The human body
- Component 2 - Biology: Environment, Evolution and Inheritance
- Component 3 - Chemistry: Elements, Mixtures and Compounds
- Component 4 - Chemistry: Chemistry in our world
- Component 5 – Physics: Energy, Forces and the Structure of Matter
- Component 6 – Physics: Electricity, Magnetism and Waves

Career Ideas

Retail, Care services, Education and early years, Health and science, Hair and beauty, Transport and logistics, Protective services, Business and administration, Construction and the built environment, Catering and hospitality and many more.



Ms C Summerfield
Teacher of Science

Course Code:



New Combined Double Award- English language & Literature GCSE



Aims of the course:

- appreciate how language connects us to the world around us through engagement with the spoken word and written texts from a range of times, places and cultures
- read and listen to a range of spoken and written texts, considering how language, register and style convey meaning
- understand the significance of purpose, audience, medium and context when communicating, expressing, understanding and responding to language
- express themselves in speaking and writing through clear, accurate, fluent and creative use of English
- develop and apply knowledge and understanding of the vocabulary, grammar and uses of the English language

What will I study?

- A range of Fiction & Non Fiction texts
- Novel- Victorian Literature or 20th c Literature
- Poetry- poetry through time & unseen poetry analysis
- Shakespeare- full play text
- Reading skills
- Writing skills
- Oracy skills

How will I be Assessed?

Double Award:Units 1-6
A total of 6 NEAs over the course of the 2 years- 3 written NEAs, 3 Oracy NEAs(Individual, paired, group)
3 Externally Assessed Exams- ONE at end of year 10, TWO at end of year 11
Single Award: Complete Units,1,2,3 & 4a
4 NEAs over 2 years, 2 written, 2 Oracy
2 Exams- ONE at end of year 10, ONE at end of year 11

CAREERS:

Law, Advertising, Journalism, Marketing, Customer Service roles, Education, Teaching, Public Relations, Communications, Screenwriting, Media & Arts, Theatre, Copywriting, Editing, Recruitment, Technical Writer, Arts Administrator, Software design- Creative input, Publishing, Game Designing

Good English skills are the baseline for almost every job imaginable!

Overview of course Double Award

Year 10	Year 11
Unit 2: Belonging Text: Novel • Understanding narrative prose • Essay writing skills / developing extended responses • Drafting / re-drafting / planning Unit 2 NEA Task A (Essay)	Unit 4: Writing Creatively • Descriptive techniques • Creating characters • Organising writing
Unit 2: Belonging Research texts (for IRP) • Research and planning for presentation • Oracy skills Unit 2 NEA Task B (IRP)	Unit 5: Continuity and Change Text: Poetry anthology • Oracy skills: paired discussion • Engaging with attitudes • Planning for an effective discussion Unit 4b exam Sit NEA Task B (Paired Discussion)
Unit 1: Context and Meaning Text: Poetry anthology & supplementary poems • Understand and respond critically to a range of poetry • Supplementary poetry as unseen • Comparison skills	Unit 5: Continuity and Change Text: Shakespeare play • Understanding Shakespeare • Essay writing skills / developing extended responses • Drafting / re-drafting / planning Unit 5 NEA Task A (Essay)
Unit 3: Influence and Power Text: Non-fiction anthology • Understanding non-fiction texts • Oracy skills • Planning and organising work Sit NEA Task B (Group discussion) Revise for Unit 1	Unit 6: Connections Text: Non-fiction anthology • Engaging with unseen texts • Making comparisons • Essays for exams
Unit 3/ Unit 1: Non-Fiction Writing Texts: Transcripts from Non-fiction anthology & additional texts • Writing skills • Planning / organisation skills Sit Unit 3 NEA Task b (Writing Task)	Revise exam texts and practise exam style questions.
Unit 4b: Motivations Text: Prose / play • Understanding written texts • Consider the representation of characters, relationships and communities Engaging with 'motivations'	Revise exam texts and practise exam style questions.
EXAMS: Unit 1 Summer	EXAMS: Unit 4b (Autumn), Unit 6 (Summer)

Landbased Studies (Level 1 BTEC Certificate)

What will I learn?

This course will help you develop skills in:-

- Animal handling
- Estate skills for example fencing, hedge laying and dry stone waling.
- Maintaining machines and equipment
- Complying with health and safety and environmental regulations in the workplace

How will I learn?

The course is a partnership between Arfon and Dwyfor secondary schools and Coleg Meirion Dwyfor.

You will spend a full morning or afternoon at Glynllifon site.

Your school will arrange free transport to and from Glynllifon.

The course is based on practical activities under the supervision of experienced instructors.

What will I need?

Dedication and discipline to work conscientiously and safely in a workplace environment.

Personal Protective Equipment (safety boots and overalls)

How will I be assessed?

- By completing practical activities
- By describing and explaining practical activities

What happens after this course?

- At the end of this course here are some of the possible pathways:-
- Follow a full time Level 1 Landbased course at Glynllifon site.
- Follow a full time Level 2 Agriculture, Countryside Management, Engineering, Animal Studies or Equine Studies course at Glynllifon site.
- Employment in the landbased industry

Career Ideas

- **Agriculture contractor**
- **Engineer**
- **Farm Worker**
- **Estate skills contractor**

Want to know more

- To find out more about this course, visit the following web page:

https://qualifications.pearson.com/content/dam/pdf/btec-entry-level-and-level-1-introductory/land-based/2016/specification/9781446932278_BTEC_%20L1_Intro_CD_LBS_Spec_230616.pdf

- Or contact: www.careerswales.com

Countryside & Environment (Level 1/2 BTEC Certificate)

What will I learn?

- This course will help you learn about:-
- The range of job opportunities and types of companies you could work for in this industry
- What it would be like to work in countryside industries.
- Estate skills e.g. fencing, hedge laying and dry stone waling.
- Forestry skills e.g. maintaining a chainsaw, tree planting and maintaining woodland
- Sawmill skills e.g. processing, splitting and handling timber.
- Environment skills e.g. maintaining and preserving habitats and wildlife.
- Health and safety in the workplace matters.

How will I learn?

- The course is a partnership between Arfon secondary schools and Coleg Meirion Dwyfor, Glynllifon is the equivalent of 2 GCSEs and is supported by local industries. You will spend a full morning or afternoon at Glynllifon site.
- Your school will arrange free transport to and from Coleg Glynllifon.
- This course is a mix of practical and classroom tasks and you will get a chance to prepare and practise your skills before you are assessed. There will be a requirement to do some of the coursework away from the college.

What will I need?

- Students will be required to wear suitable Personal Protective Equipment (PPE), for instance safety boots and overalls

How will I be assessed?

- You will produce work which is assessed by your course tutor and the examination board.

What happens after this course?

- At the end of this course here are some of the pathways available:-
- Full time Level 2 or Level 3 course in Countryside Management at Glynllifon
- Follow one of a variety of academic or vocational courses on one of Grwp Llandrillo Menai sites or at school.
- Work in the countryside and environment industry

Career Ideas

- **Natural Resources Wales**
- **Estate Manager**
- **Tree Surgeon**

Want to know more

- To find out more about this course, visit the following web page:

<https://qualifications.pearson.com/en/qualifications/btec-firsts/countryside-and-environment-2010-qcf.html>

- Or contact: www.careerswales.com



Hairdressing & Beauty (VTCT Level 1 Extended Award)

What will I learn?

This course will help you to learn:

- About the types of jobs and salons you could work in and what it would be like to work in the hair and beauty industry.
- Basic practical Hair technique skills
- Basic practical Beauty skills
- You will be able to produce a total Hair and Beauty look using the skills you have developed
- You will choose from a range of practical options
- Basic anatomy and physiology of the hair and skin

How will I learn?

The course is based on the Bangor Coleg Menai site for 3 hours a week in Years 10 and 11 and transport will be provided from and back to your school. This course is a mix of classroom and practical tasks and you will get a chance to prepare and practise your skills before you are assessed so that you know and understand what you will have to do.

What will I need?

Learners will be given a tabard to wear in practical sessions. You will need a file, dividers and plastic wallets.

For the practical aspects if you want to bring your own make-up or nail art products that will be acceptable.

How will I be assessed?

You will produce coursework which is assessed mainly by your course tutor. At the end of the course, you will carry out practical assessments to determine your final grade- Pass Merit or Distinction.

What happens after this course?

After Year 11, you could go on to the NVQ Diploma Level 1 in Hairdressing or Beauty Therapy or a Foundation Modern Apprenticeship Level 2. After all this, you will be well prepared for work and/or to start an apprenticeship in the hair and beauty industry. But, if you don't fancy carrying on with hair and beauty, you could choose other suitable qualifications depending on what you want to look at next. Your careers adviser will be able to help you with your choices when you leave school.

Career Ideas

- **Hairdresser**
- **Beauty Therapist**
- **Alternative Therapist**

Want to know more

To find out more about this course, visit the following web page:

<https://www.vtct.org.uk/find-a-qualification/>

Or contact: www.careerswales.com

Construction(City & Guilds Level 1 Certificate)

What will I learn?

This course will help you to learn:

- About the types of jobs and building sites you could work in and what it would be like to work in the construction industry;
- How to do basic Brickwork, Plastering, Joinery, how to keep a work area clean tidy and how to work safely in the construction industry;
- About environmental issues, health and safety and law in the workplace.

How will I learn?

The course is based on the Llangefni Coleg Menai site for 3 hours a week in Year 10 and 11 and transport will be provided from and back to your school. This course is a mix of classroom and practical tasks and you will get a chance to prepare and practise your skills before you are assessed so that you know and understand what you will have to do.

What will I need?

Students will be required to wear suitable personal protection clothing (safety boots and overalls) which will be available from the College.

How will I be assessed?

You will produce coursework which is assessed mainly by your course tutor. At the end of each course unit, you will complete a practical task assessment that will test your knowledge.

What happens after this course?

After Year 11, you could go on to the City and Guilds Diploma level 1 / 2 full time or as an apprentice in Brickwork Plastering and Joinery on a day release basis leading to a Diploma / NVQ level 2 or a day release ICA/NVQ level 2 construction course. After all this, you will be well prepared for work and/or to start further training in the construction industry.

But, if you don't fancy carrying on with construction, you could choose other suitable qualifications depending on what you want to look at next. Your careers adviser will be able to help you with your choices when you leave school.

Career Ideas

- **Bricklayer**
- **Painter & Decorator**
- **Plasterer**
- **Joiner**

Want to know more

To find out more about this course, visit the following web page:

- To find out more about this course, visit the following web page:

<http://www.cityandguilds.com/qualifications-and-apprenticeships/construction/construction/6219-construction-skills#tab=information&acc=level1>

Or contact: www.careerswales.com

- **COURSE NOT SUITABLE FOR LEARNERS WITH ECZEMA**